

The Venn Reports

for

1999

Note

January

February

March

April

May

June

July

August

September

October

November

December



State of Delaware

*The Department of Services
for Children, Youth and Their Families*

Monthly Snapshots of Client Enrollment

The snapshots produced monthly represent client enrollment records open on the 15th of the month. The distribution of enrollments by division is displayed in a Venn diagram, as is the distribution of clients in custodial care (including, but not limited to foster placements, group homes, residential treatment, and hospitalization). The breakdown of enrollees by age, sex, and race is provided in tables and charts.

Caution is advised in interpreting these data: because of the nature of the Department's responsibility for youth in our care, these numbers may not represent persons who were receiving direct service on the target date. They do, however, accurately represent the unduplicated number of persons for whom the Department is responsible. In some cases the overlap of services may be overstated. For example, applications and requests for services via the Interstate Compact are registered in the Division of Family Services, whereas clients may not actually receive any direct services from this division. The administrative burden represented by Interstate Compact cases is considerable, and represents more than 10% of the client count in DFS.

Venn diagrams representing the number of clients in each of the seven cells, distribution of placement and community service by cell, and average age of client in each cell, are produced monthly. The output is prepared on the 15th of the month, and the diagrams are generated and formatted within two working days of data output. When appropriate, client enrollment data are joined to address data to allow the Information and Assessment Unit to produce maps representing the geographic distribution of clients. Additional analyses are produced on an *ad-hoc* basis.

The Venn Report

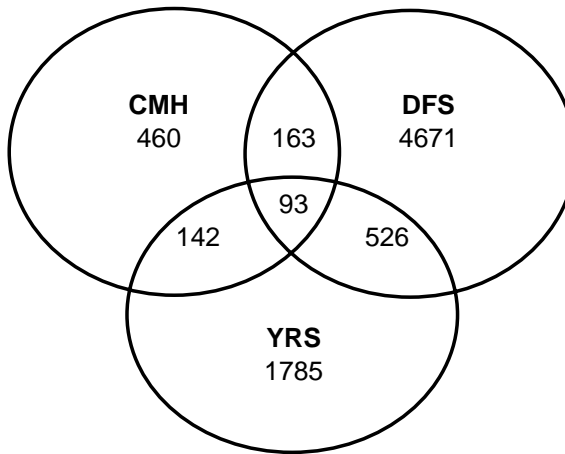
January 1999



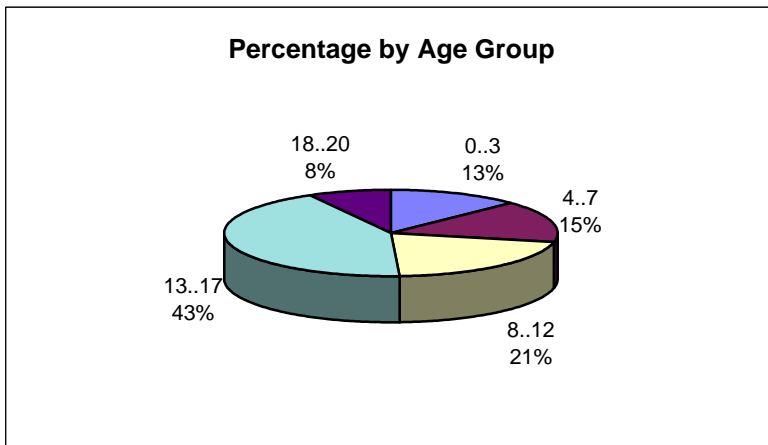
State of Delaware

*The Department of Services
for Children, Youth and Their Families*

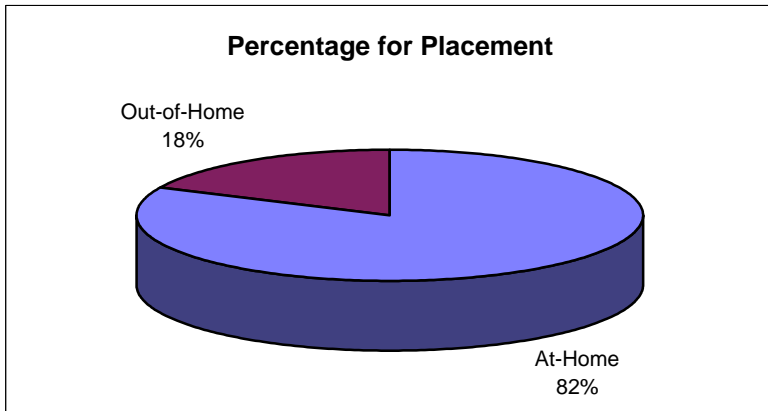
Frequencies by Division		
	Frequency	Percent
CMH	460	5.9
DFS	4671	59.6
YRS	1785	22.8
CMH&DFS	163	2.1
CMH&YRS	142	1.8
DFS&YRS	526	6.7
CMH&DFS&YRS	93	1.2
Total	7840	100.0



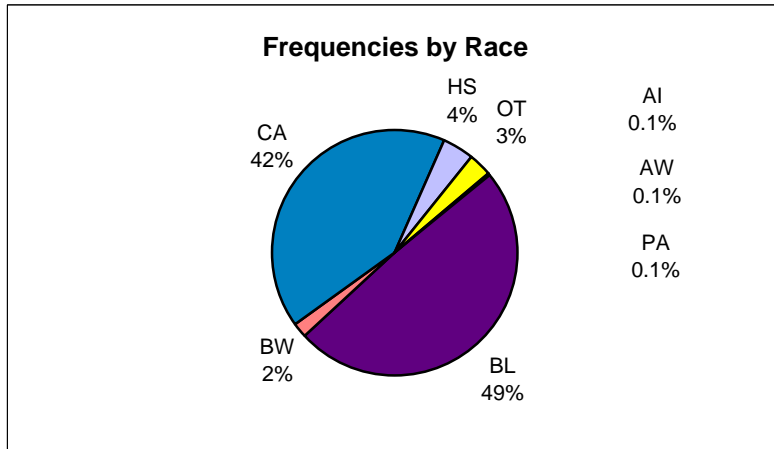
Frequencies by Age Group		
	Frequency	Percent
0..3	1009	12.9
4..7	1205	15.4
8..12	1642	20.9
13..17	3356	42.8
18..20	628	8.0
Total	7840	100.0



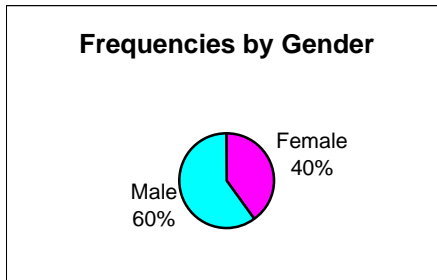
Frequencies by Placement		
	Frequency	Percent
At-Home	6432	82.0
Out-of-Home	1408	18.0
Total	7840	100.0



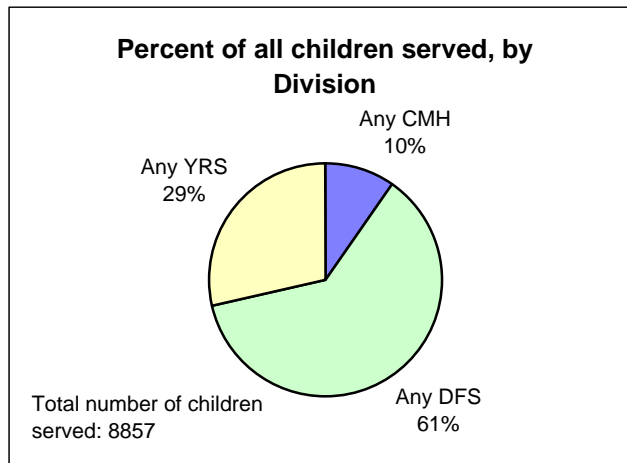
Frequencies by Race		
	Frequency	Percent
AB	2	0.0
AI	7	0.1
AN	1	0.0
AW	8	0.1
BL	3842	49.0
BW	147	1.9
CA	3258	41.6
HS	335	4.3
OT	232	3.0
PA	8	0.1
Total	7840	100.0



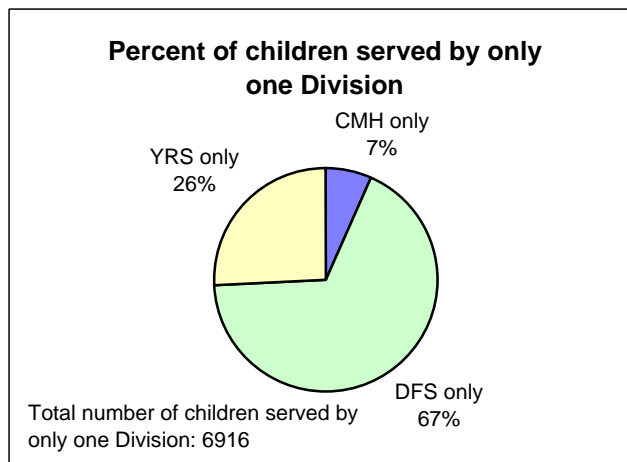
Frequencies by Gender		
	Frequency	Percent
Female	3141	40.1
Male	4699	59.9
Total	7840	100.0



	All	%All
Any CMH	858	9.69
Any DFS	5453	61.57
Any YRS	2546	28.75
Total	8857	100.00



	Only	%Only
CMH only	460	6.65
DFS only	4671	67.54
YRS only	1785	25.81
Total	6916	100.00

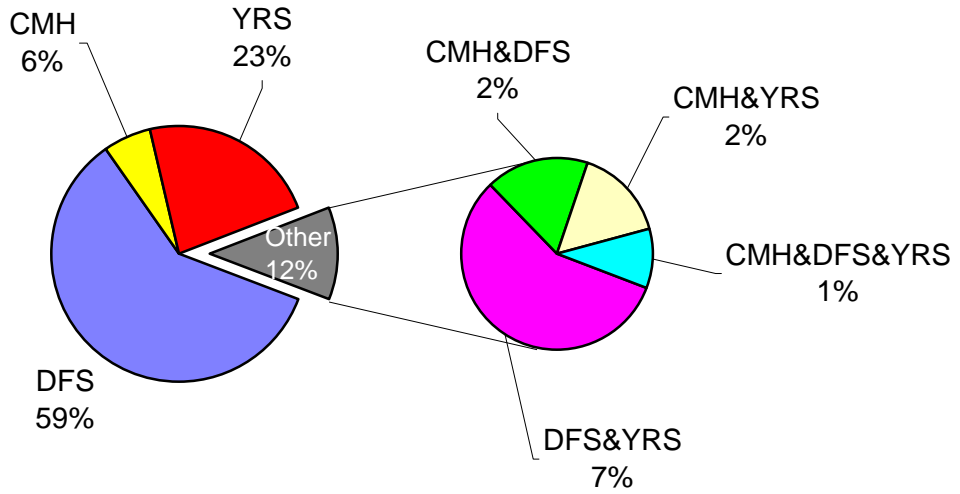


For PieNPie Chart only

Frequencies by Division		
	Frequency	Percent
DFS	4671	59.6
CMH	460	5.9
YRS	1785	22.8
DFS&YRS	526	6.7
CMH&DFS	163	2.1
CMH&YRS	142	1.8
CMH&DFS&YRS	93	1.2
Total	7840	100.0

How were services being used on January 15th, 1999?

Children are age 20 or less



The Venn Report

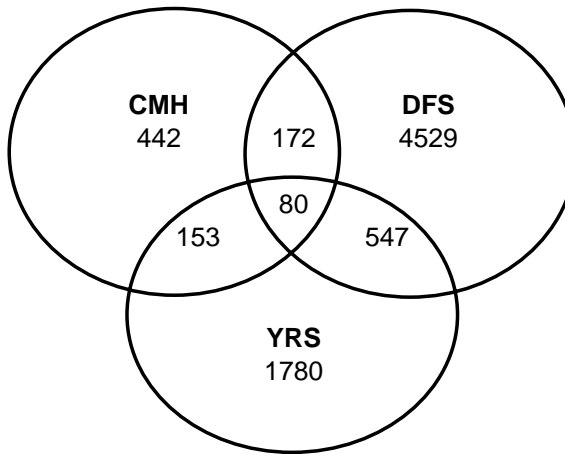
February 1999



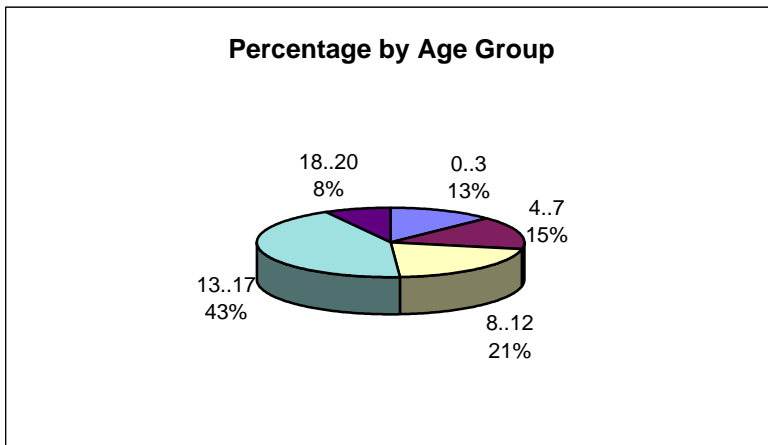
State of Delaware

*The Department of Services
for Children, Youth and Their Families*

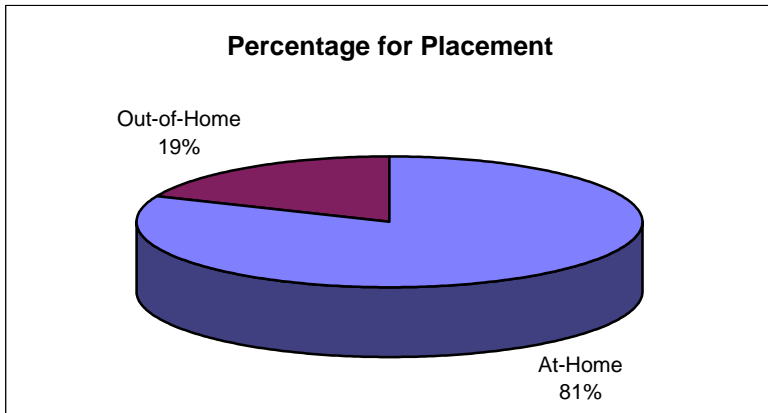
Frequencies by Division		
	Frequency	Percent
CMH	442	5.7
DFS	4529	58.8
YRS	1780	23.1
CMH&DFS	172	2.2
CMH&YRS	153	2.0
DFS&YRS	547	7.1
CMH&DFS&YRS	80	1.0
Total	7703	100.0



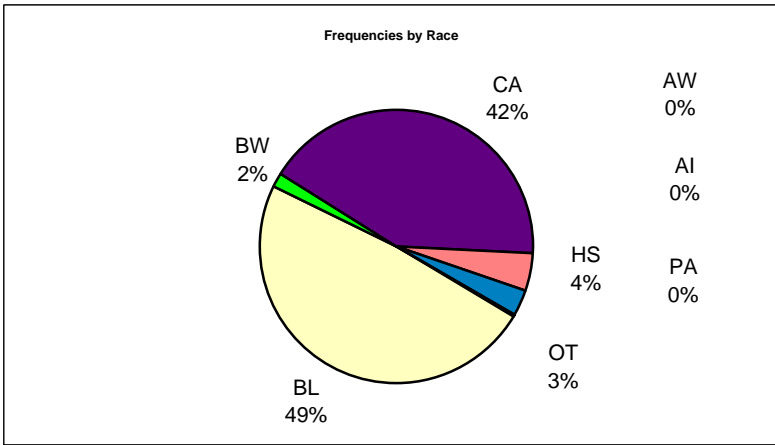
Frequencies by Age Group		
	Frequency	Percent
0..3	977	12.7
4..7	1192	15.5
8..12	1605	20.8
13..17	3305	42.9
18..20	624	8.1
Total	7703	100.0



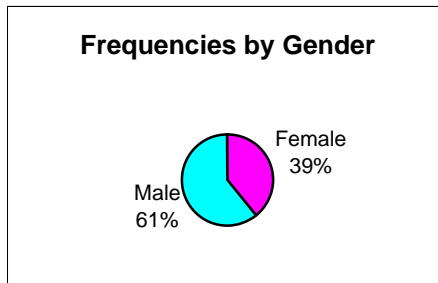
Frequencies by Placement		
	Frequency	Percent
At-Home	6268	81.4
Out-of-Home	1435	18.6
Total	7703	100.0



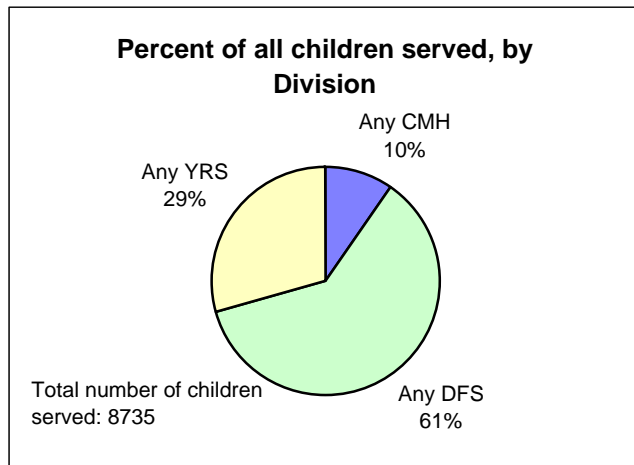
Frequencies by Race		
	Frequency	Percent
AB	2	0.0
AI	10	0.1
AW	8	0.1
BL	3737	48.5
BW	132	1.7
CA	3236	42.0
HS	345	4.5
OT	224	2.9
PA	9	0.1
Total	7703	100.0



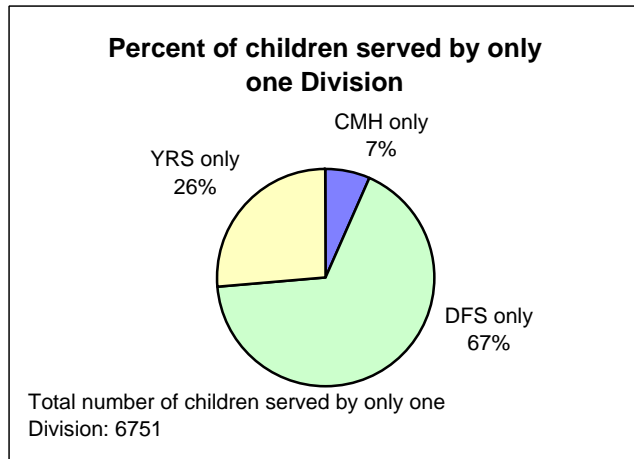
Frequencies by Gender		
	Frequency	Percent
Female	3012	39.1
Male	4691	60.9
Total	7703	100.0



	All	%All
Any CMH	847	9.70
Any DFS	5328	61.00
Any YRS	2560	29.31
Total	8735	100.00



	Only	%Only
CMH only	442	6.55
DFS only	4529	67.09
YRS only	1780	26.37
Total	6751	100.00

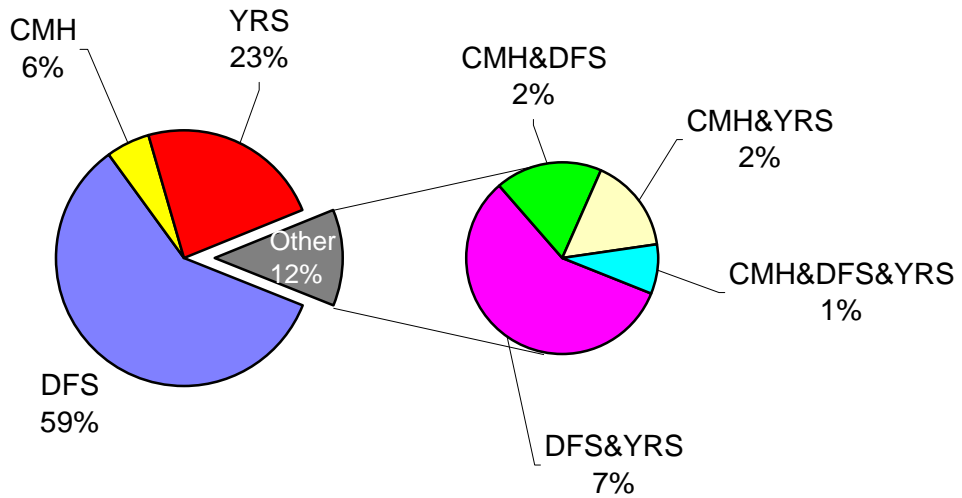


For PieNPie Chart only

Frequencies by Division		
	Frequency	Percent
DFS	4529	58.8
CMH	442	5.7
YRS	1780	23.1
DFS&YRS	547	7.1
CMH&DFS	172	2.2
CMH&YRS	153	2.0
CMH&DFS&YRS	80	1.0
Total	7703	100.0

How were services being used on February 15th, 1999

Children are age 20 or less



The Venn Report

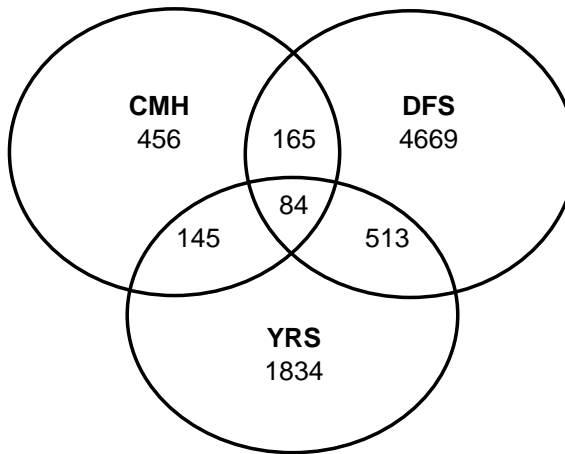
March 1999



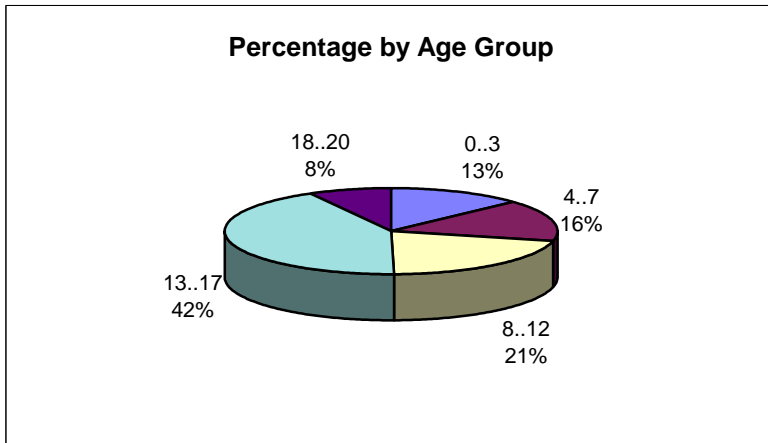
State of Delaware

*The Department of Services
for Children, Youth and Their Families*

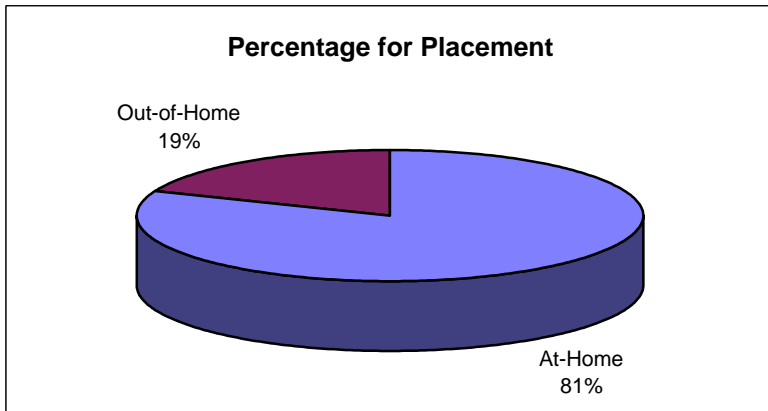
Frequencies by Division		
	Frequency	Percent
CMH	456	5.8
DFS	4669	59.4
YRS	1834	23.3
CMH&DFS	165	2.1
CMH&YRS	145	1.8
DFS&YRS	513	6.5
CMH&DFS&YRS	84	1.1
Total	7866	100.0



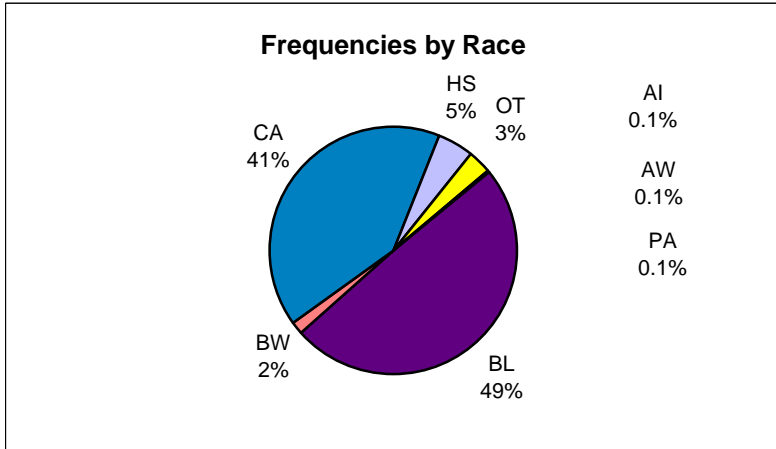
Frequencies by Age Group		
	Frequency	Percent
0..3	1021	13.0
4..7	1224	15.6
8..12	1659	21.1
13..17	3329	42.3
18..20	633	8.0
Total	7866	100.0



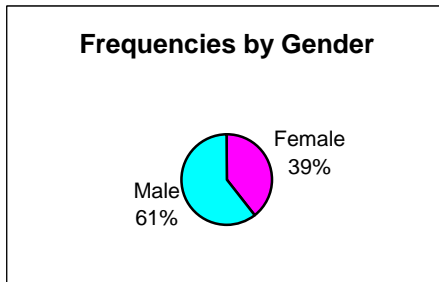
Frequencies by Placement		
	Frequency	Percent
At-Home	6391	81.2
Out-of-Home	1475	18.8
Total	7866	100.0



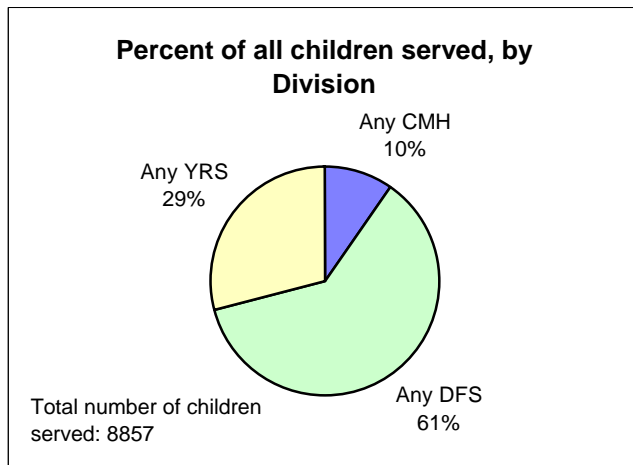
Frequencies by Race		
	Frequency	Percent
AB	4	0.1
AI	8	0.1
AN		0.0
AW	8	0.1
BL	3872	49.2
BW	131	1.7
CA	3237	41.2
HS	358	4.6
OT	239	3.0
PA	9	0.1
Total	7866	100.0



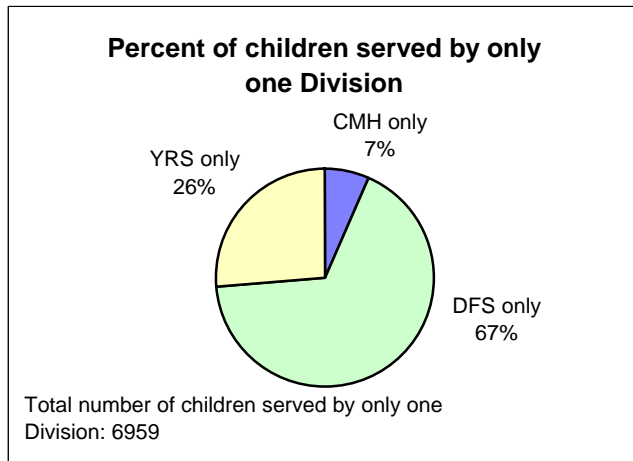
Frequencies by Gender		
	Frequency	Percent
Female	3103	39.4
Male	4763	60.6
Total	7866	100.0



	All	%All
Any CMH	850	9.60
Any DFS	5431	61.32
Any YRS	2576	29.08
Total	8857	100.00



	Only	%Only
CMH only	456	6.55
DFS only	4669	67.09
YRS only	1834	26.35
Total	6959	100.00

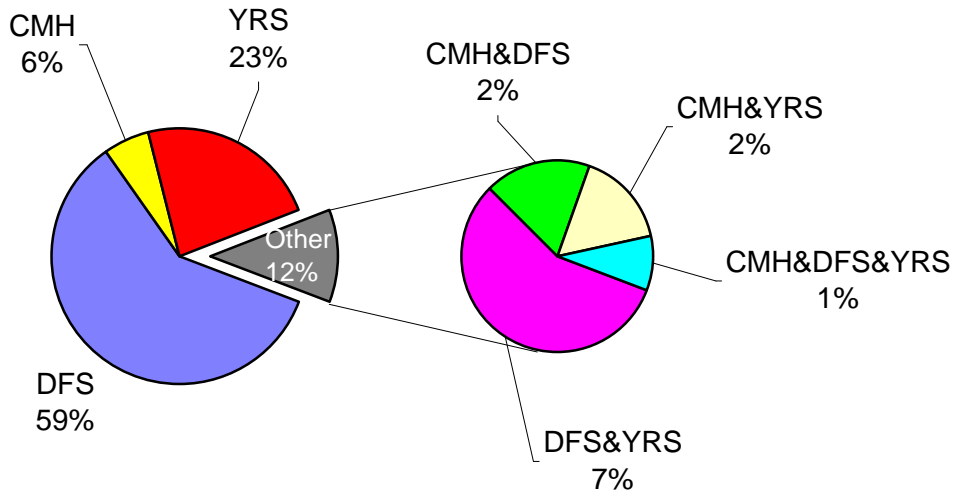


For PieNPie Chart only

Frequencies by Division		
	Frequency	Percent
DFS	4669	59.4
CMH	456	5.8
YRS	1834	23.3
DFS&YRS	513	6.5
CMH&DFS	165	2.1
CMH&YRS	145	1.8
CMH&DFS&YRS	84	1.1
Total	7866	100.0

How were services being used on March 15th, 1999?

Children are age 20 or less



The Venn Report

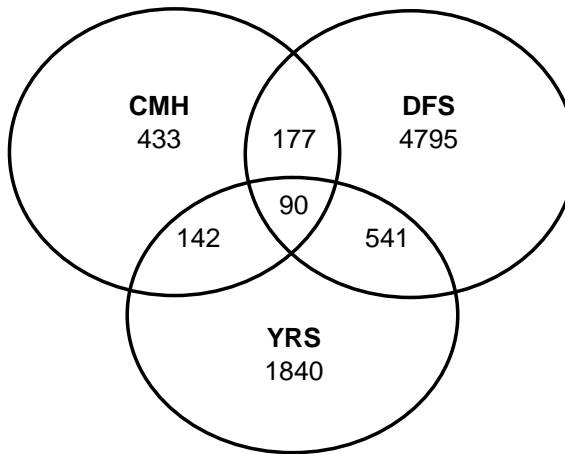
April 1999



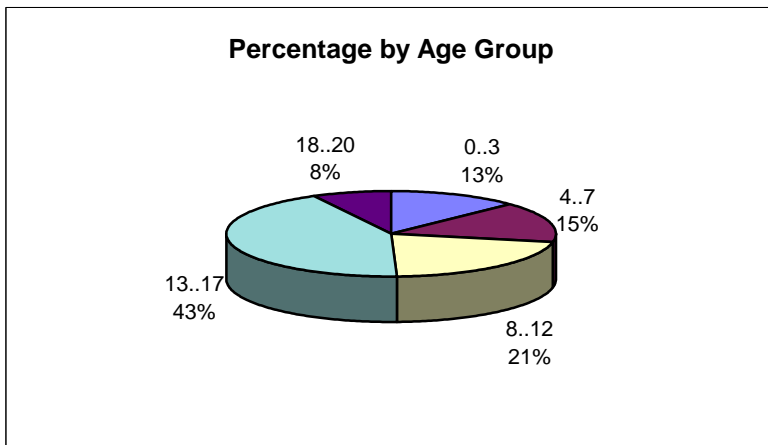
State of Delaware

*The Department of Services
for Children, Youth and Their Families*

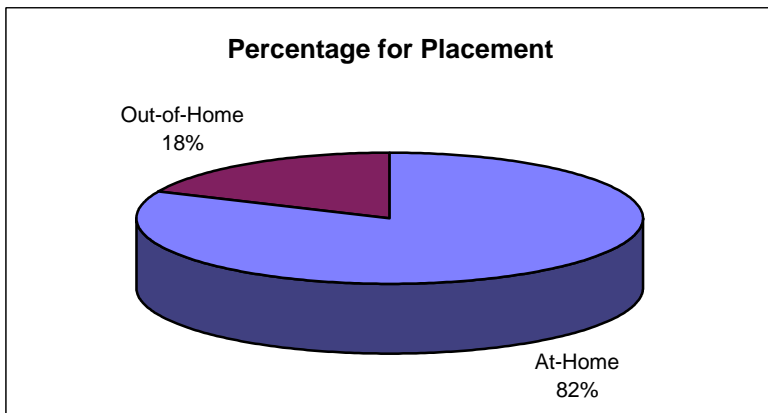
Frequencies by Division		
	Frequency	Percent
CMH	433	5.4
DFS	4795	59.8
YRS	1840	22.9
CMH&DFS	177	2.2
CMH&YRS	142	1.8
DFS&YRS	541	6.7
CMH&DFS&YRS	90	1.1
Total	8018	100.0



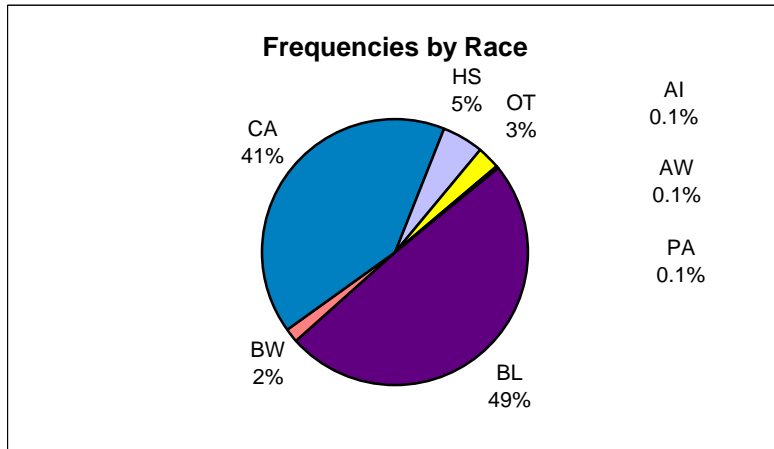
Frequencies by Age Group		
	Frequency	Percent
0..3	1027	12.8
4..7	1223	15.3
8..12	1712	21.4
13..17	3427	42.7
18..20	629	7.8
Total	8018	100.0



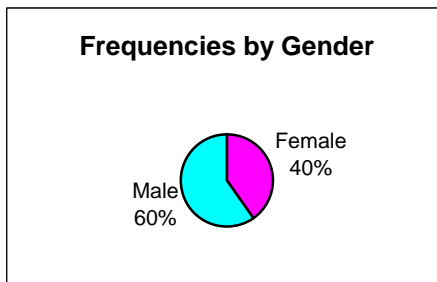
Frequencies by Placement		
	Frequency	Percent
At-Home	6543	81.6
Out-of-Home	1475	18.4
Total	8018	100.0



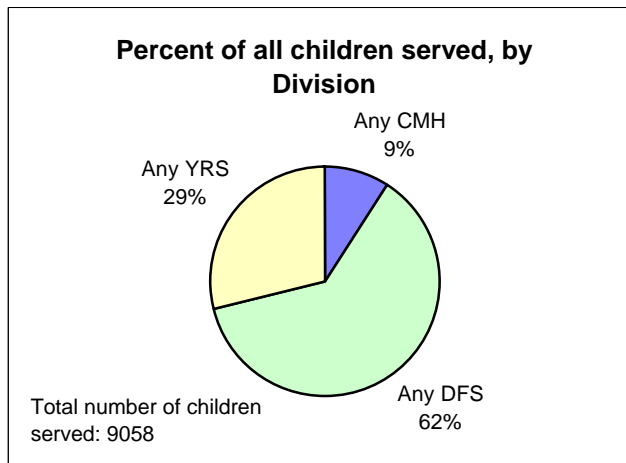
Frequencies by Race		
	Frequency	Percent
AB	3	0.0
AI	11	0.1
AN		0.0
AW	7	0.1
BL	3940	49.1
BW	141	1.8
CA	3294	41.1
HS	394	4.9
OT	219	2.7
PA	9	0.1
Total	8018	100.0



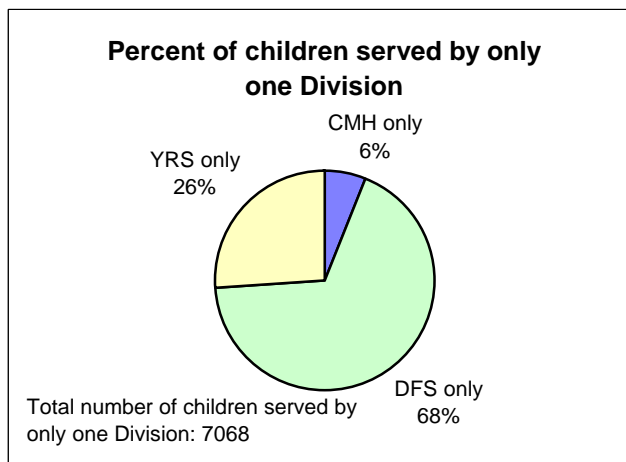
Frequencies by Gender		
	Frequency	Percent
Female	3221	40.2
Male	4797	59.8
Total	8018	100.0



	All	%All
Any CMH	842	9.30
Any DFS	5603	61.86
Any YRS	2613	28.85
Total	9058	100.00



	Only	%Only
CMH only	433	6.13
DFS only	4795	67.84
YRS only	1840	26.03
Total	7068	100.00

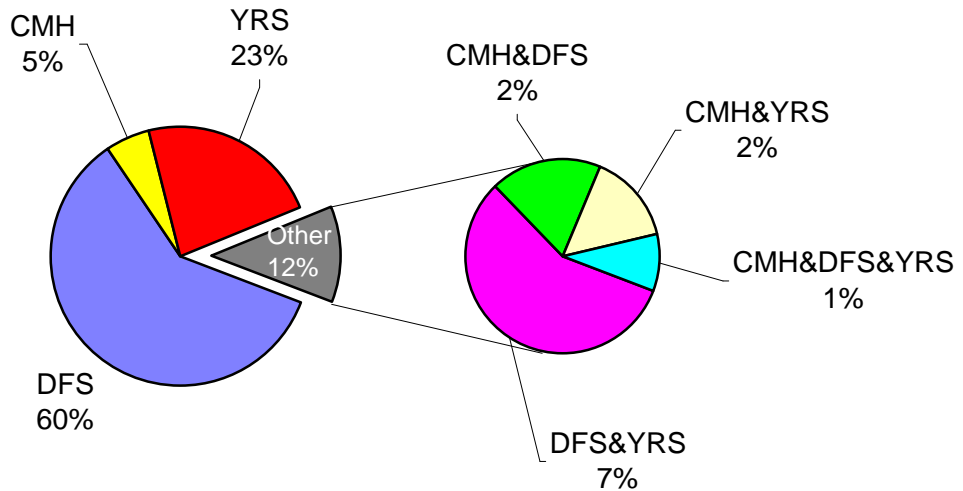


For PieNPie Chart only

Frequencies by Division		
	Frequency	Percent
DFS	4795	59.8
CMH	433	5.4
YRS	1840	22.9
DFS&YRS	541	6.7
CMH&DFS	177	2.2
CMH&YRS	142	1.8
CMH&DFS&YRS	90	1.1
Total	8018	100.0

How were services being used on April 15th, 1999?

Children are age 20 or less



The Venn Report

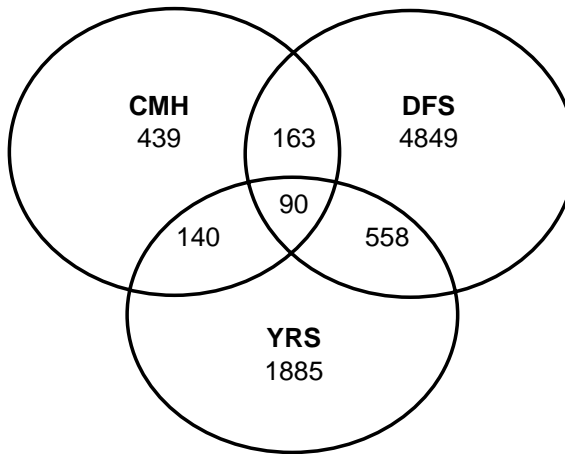
May 1999



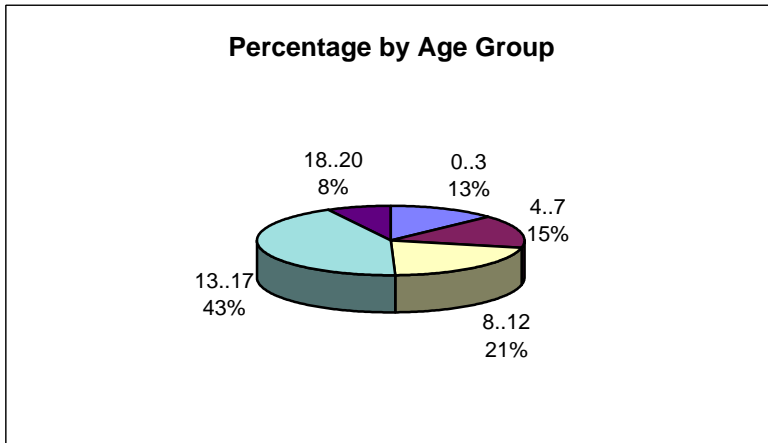
State of Delaware

*The Department of Services
for Children, Youth and Their Families*

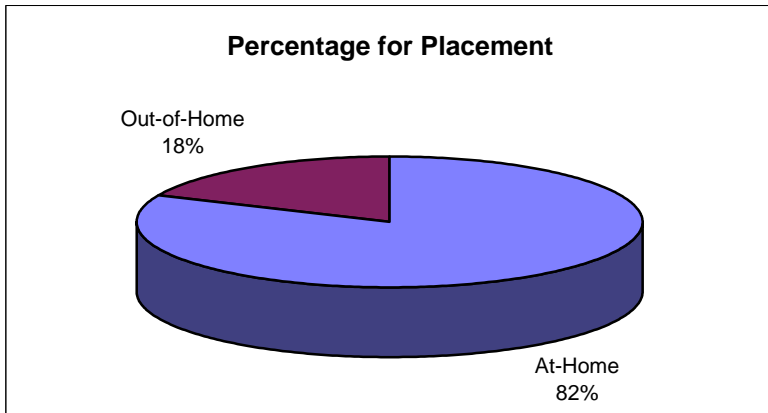
Frequencies by Division		
	Frequency	Percent
CMH	439	5.4
DFS	4849	59.7
YRS	1885	23.2
CMH&DFS	163	2.0
CMH&YRS	140	1.7
DFS&YRS	558	6.9
CMH&DFS&YRS	90	1.1
Total	8124	100.0



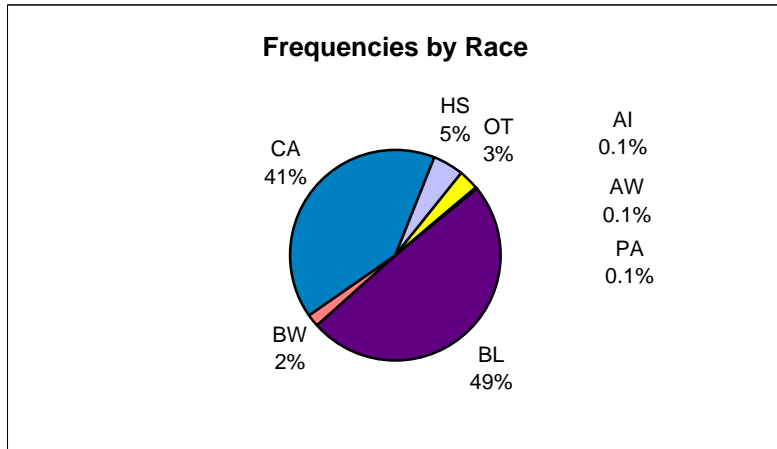
Frequencies by Age Group		
	Frequency	Percent
0..3	1065	13.1
4..7	1240	15.3
8..12	1716	21.1
13..17	3480	42.8
18..20	623	7.7
Total	8124	100.0



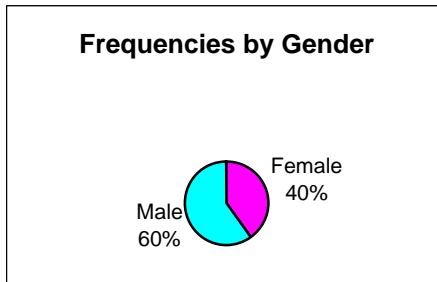
Frequencies by Placement		
	Frequency	Percent
At-Home	6631	81.6
Out-of-Home	1493	18.4
Total	8124	100.0



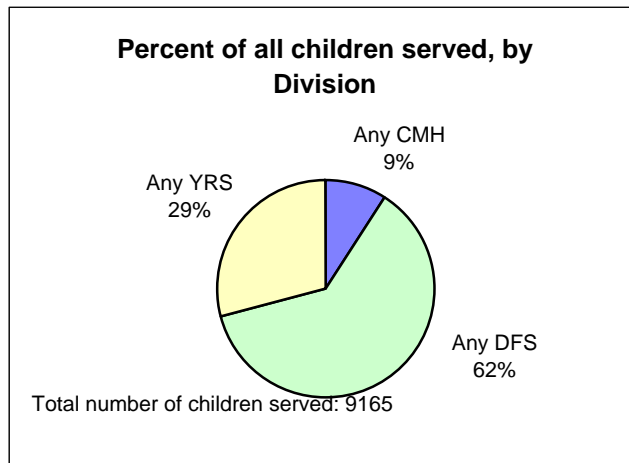
Frequencies by Race		
	Frequency	Percent
AB	3	0.0
AI	10	0.1
AN		0.0
AW	9	0.1
BL	4005	49.3
BW	154	1.9
CA	3302	40.6
HS	403	5.0
OT	228	2.8
PA	10	0.1
Total	8124	100.0



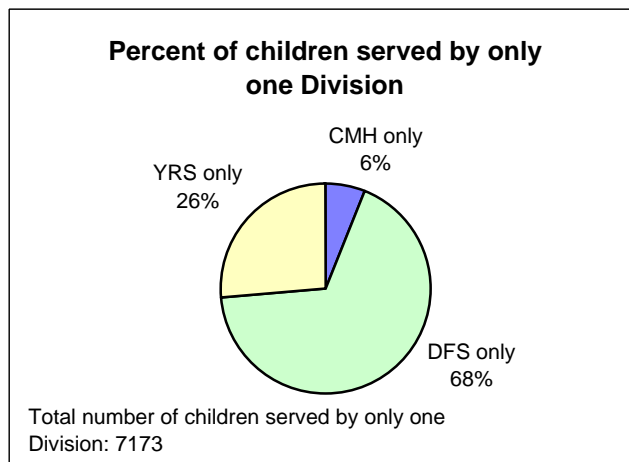
Frequencies by Gender		
	Frequency	Percent
Female	3252	40.0
Male	4872	60.0
Total	8124	100.0



	All	%All
Any CMH	832	9.08
Any DFS	5660	61.76
Any YRS	2673	29.17
Total	9165	100.00



	Only	%Only
CMH only	439	6.12
DFS only	4849	67.60
YRS only	1885	26.28
Total	7173	100.00

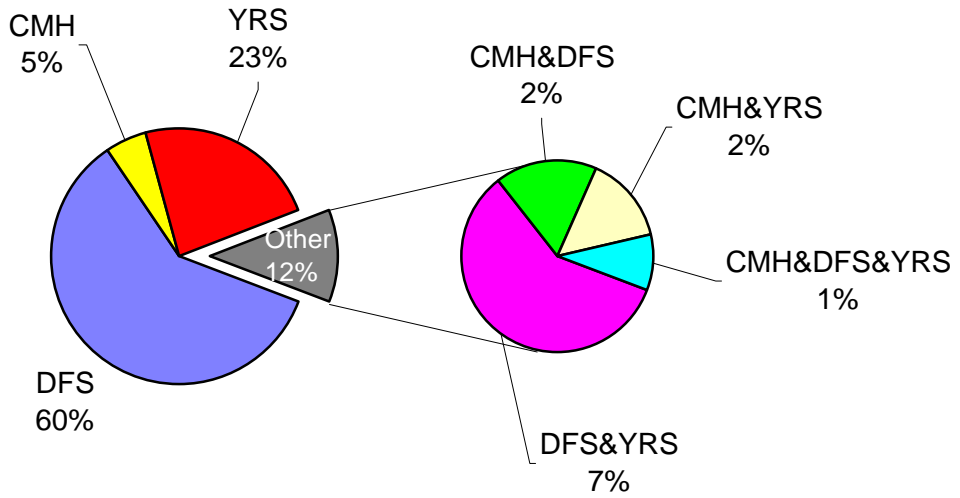


For PiePie Chart only

Frequencies by Division		
	Frequency	Percent
DFS	4849	59.7
CMH	439	5.4
YRS	1885	23.2
DFS&YRS	558	6.9
CMH&DFS	163	2.0
CMH&YRS	140	1.7
CMH&DFS&YRS	90	1.1
Total	8124	100.0

How were services being used on May 15th, 1999?

Children are age 20 or less



The Venn Report

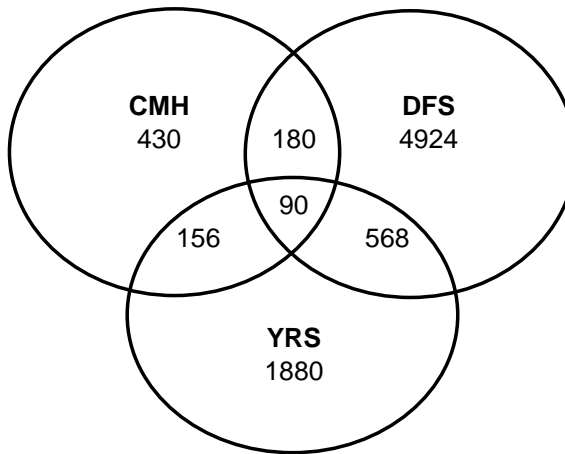
June 1999



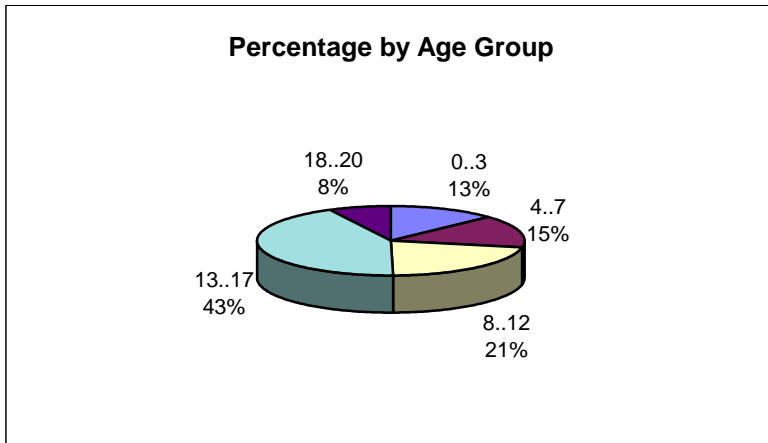
State of Delaware

*The Department of Services
for Children, Youth and Their Families*

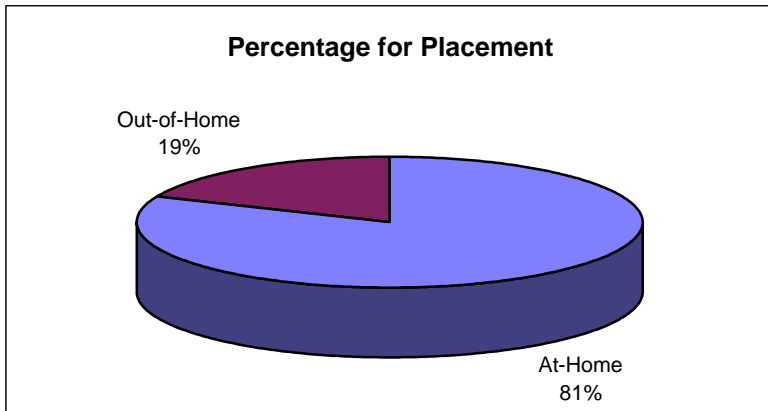
Frequencies by Division		
	Frequency	Percent
CMH	430	5.2
DFS	4924	59.8
YRS	1880	22.8
CMH&DFS	180	2.2
CMH&YRS	156	1.9
DFS&YRS	568	6.9
CMH&DFS&YRS	90	1.1
Total	8228	100.0



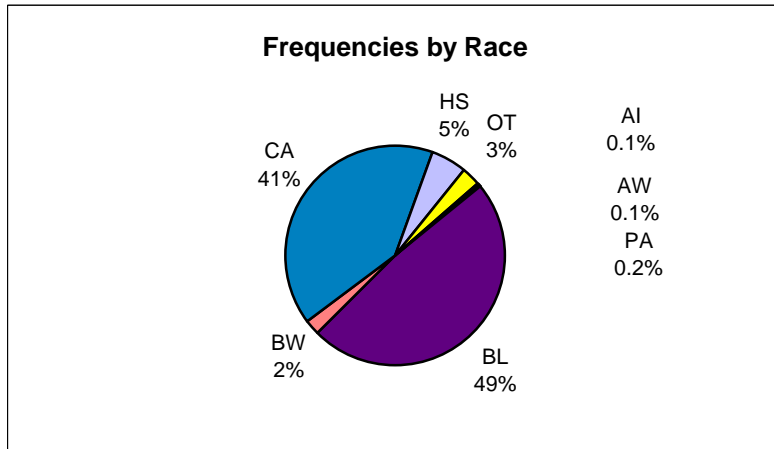
Frequencies by Age Group		
	Frequency	Percent
0..3	1066	13.0
4..7	1251	15.2
8..12	1765	21.5
13..17	3525	42.8
18..20	621	7.5
Total	8228	100.0



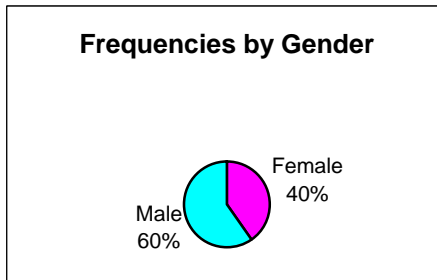
Frequencies by Placement		
	Frequency	Percent
At-Home	6691	81.3
Out-of-Home	1537	18.7
Total	8228	100.0



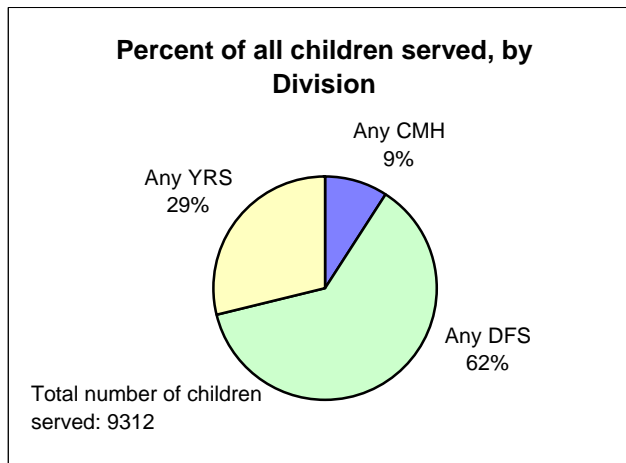
Frequencies by Race		
	Frequency	Percent
AB	2	0.0
AI	10	0.1
AN		0.0
AW	7	0.1
BL	3980	48.4
BW	175	2.1
CA	3373	41.0
HS	419	5.1
OT	249	3.0
PA	13	0.2
Total	8228	100.0



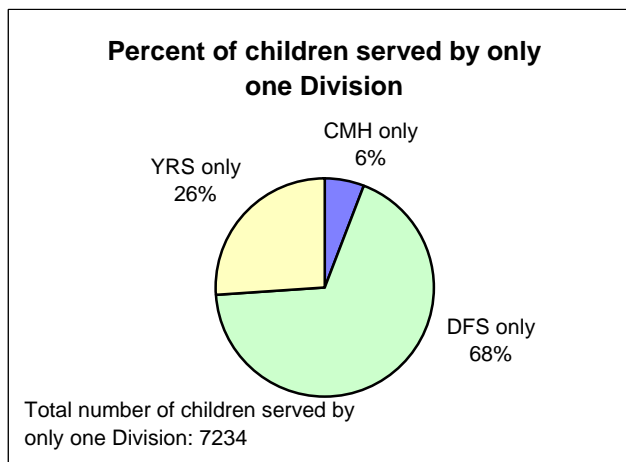
Frequencies by Gender		
	Frequency	Percent
Female	3305	40.2
Male	4923	59.8
Total	8228	100.0



	All	%All
Any CMH	856	9.19
Any DFS	5762	61.88
Any YRS	2694	28.93
Total	9312	100.00



	Only	%Only
CMH only	430	5.94
DFS only	4924	68.07
YRS only	1880	25.99
Total	7234	100.00

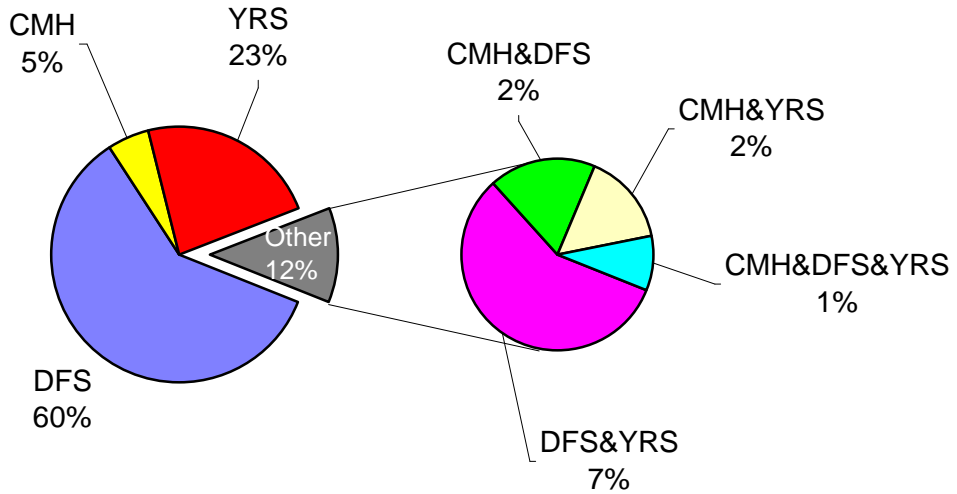


For PieNPie Chart only

Frequencies by Division		
	Frequency	Percent
DFS	4924	59.8
CMH	430	5.2
YRS	1880	22.8
DFS&YRS	568	6.9
CMH&DFS	180	2.2
CMH&YRS	156	1.9
CMH&DFS&YRS	90	1.1
Total	8228	100.0

How were services being used on Jun 15th, 1999?

Children are age 20 or less



The Venn Report

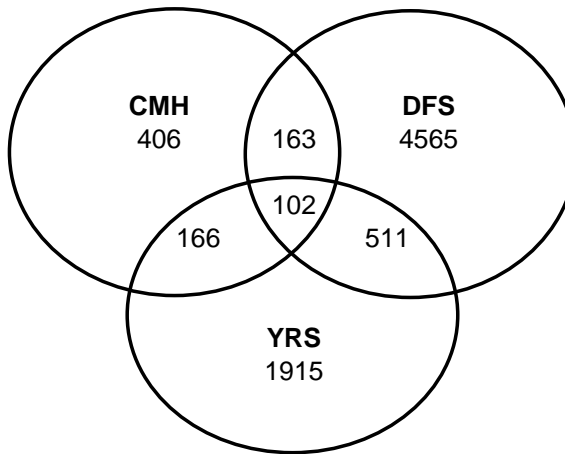
July 1999



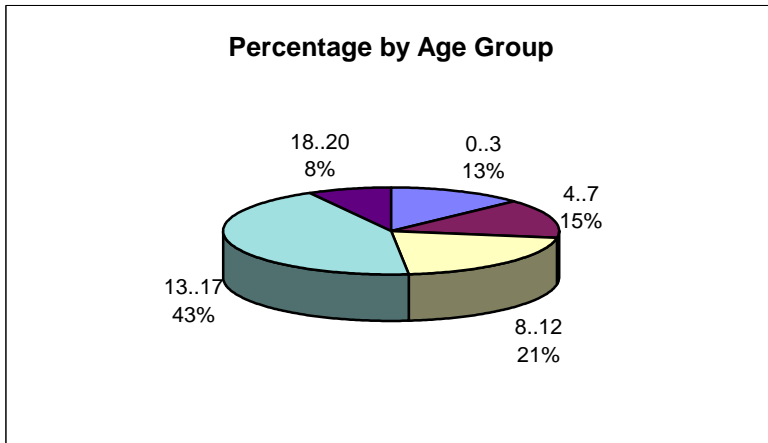
State of Delaware

*The Department of Services
for Children, Youth and Their Families*

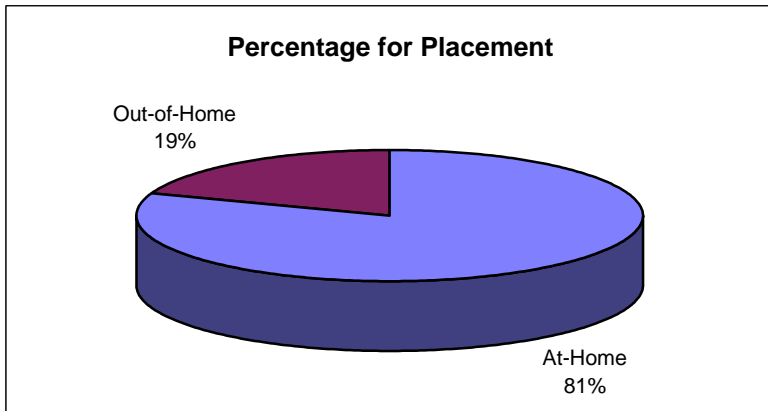
Frequencies by Division		
	Frequency	Percent
CMH	406	5.2
DFS	4565	58.3
YRS	1915	24.5
CMH&DFS	163	2.1
CMH&YRS	166	2.1
DFS&YRS	511	6.5
CMH&DFS&YRS	102	1.3
Total	7828	100.0



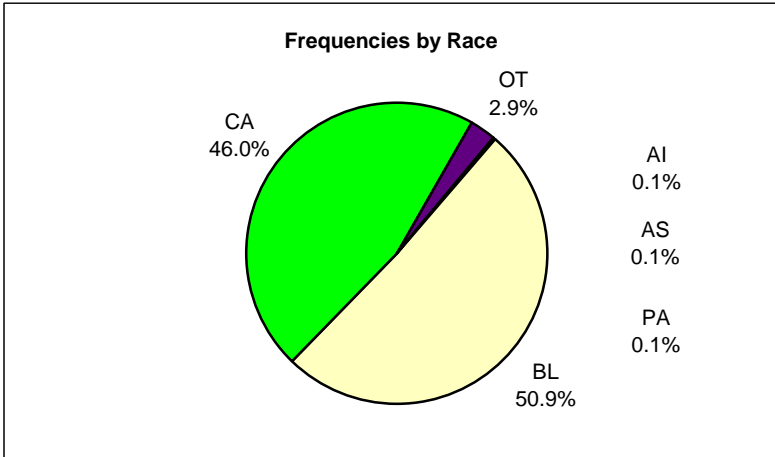
Frequencies by Age Group		
	Frequency	Percent
0..3	1026	13.1
4..7	1136	14.5
8..12	1629	20.8
13..17	3411	43.6
18..20	626	8.0
Total	7828	100.0



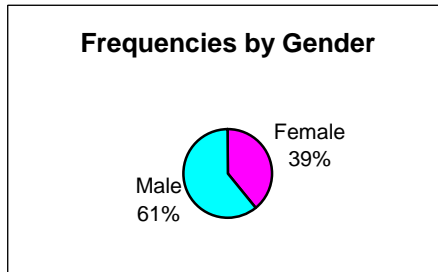
Frequencies by Placement		
	Frequency	Percent
At-Home	6308	80.6
Out-of-Home	1520	19.4
Total	7828	100.0



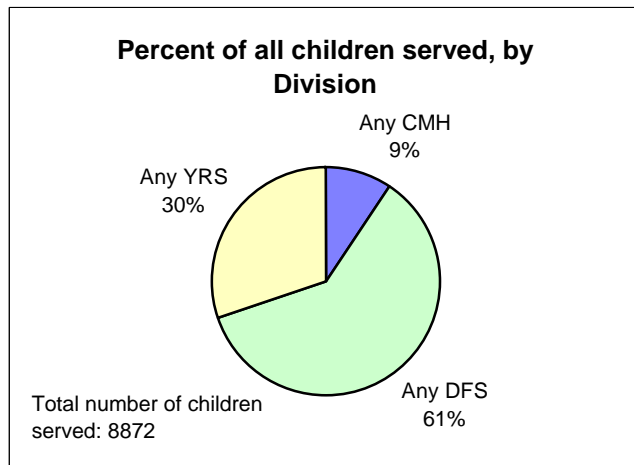
Frequencies by Race		
	Frequency	Percent
AI	9	0.1
AS	10	0.1
BL	3983	50.9
CA	3598	46.0
OT	224	2.9
PA	4	0.1
Total	7828	100.0



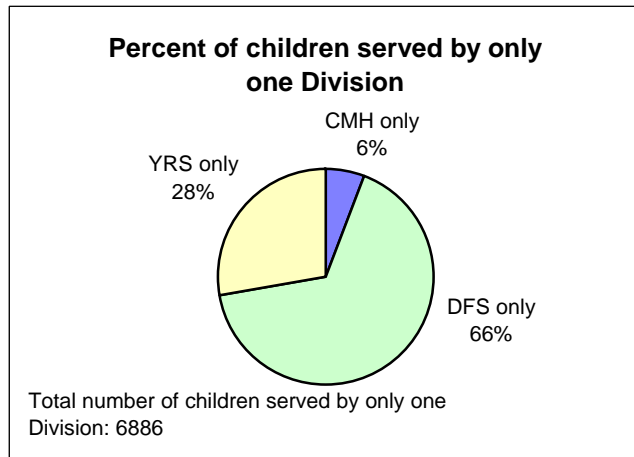
Frequencies by Gender		
	Frequency	Percent
Female	3064	39.1
Male	4764	60.9
Total	7828	100.0



	All	%All
Any CMH	837	9.43
Any DFS	5341	60.20
Any YRS	2694	30.37
Total	8872	100.00



	Only	%Only
CMH only	406	5.90
DFS only	4565	66.29
YRS only	1915	27.81
Total	6886	100.00

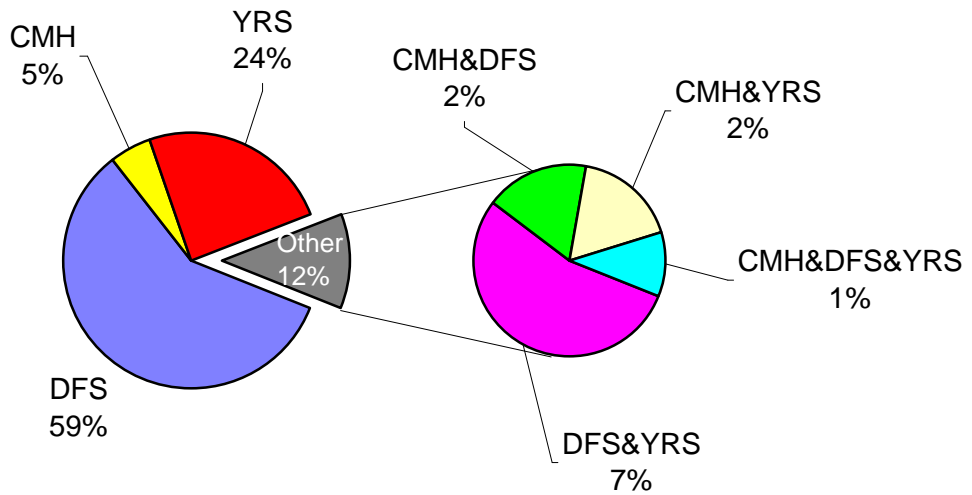


For PieNPie Chart only

Frequencies by Division		
	Frequency	Percent
DFS	4565	58.3
CMH	406	5.2
YRS	1915	24.5
DFS&YRS	511	6.5
CMH&DFS	163	2.1
CMH&YRS	166	2.1
CMH&DFS&YRS	102	1.3
Total	7828	100.0

How were services being used on July 15th, 1999

Children are age 20 or less



The Venn Report

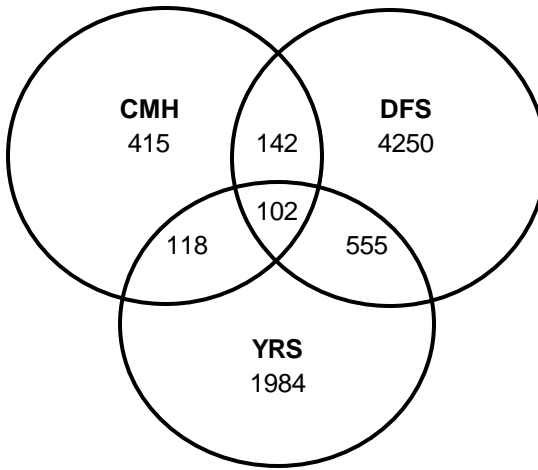
August 1999



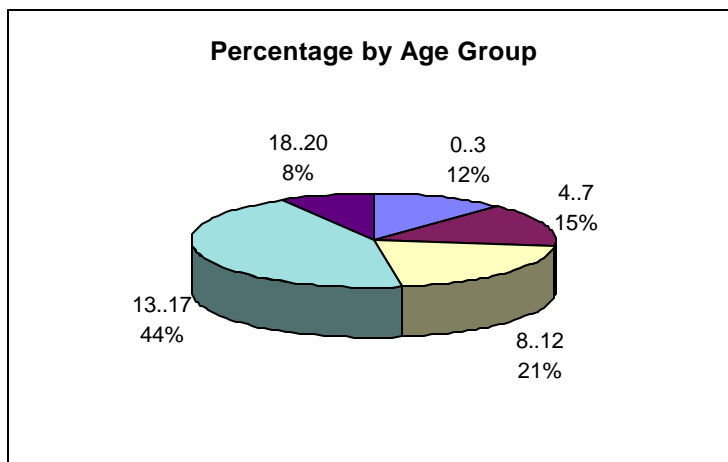
State of Delaware

*The Department of Services
for Children, Youth and Their Families*

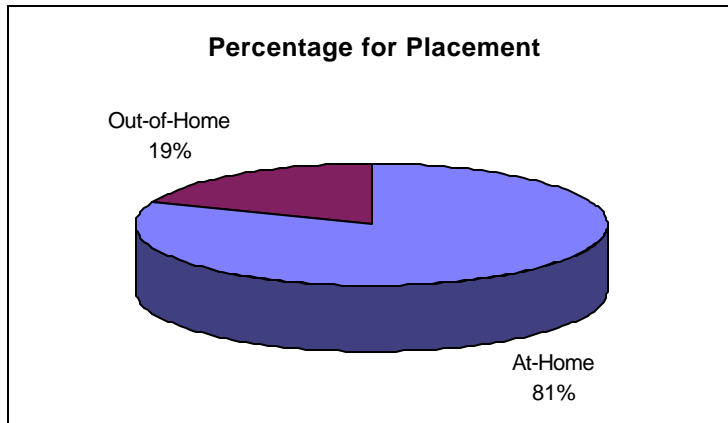
Frequencies by Division		
	Frequency	Percent
CMH	415	5.5
DFS	4250	56.2
YRS	1984	26.2
CMH&DFS	142	1.9
CMH&YRS	118	1.6
DFS&YRS	555	7.3
CMH&DFS&YRS	102	1.3
Total	7566	100.0



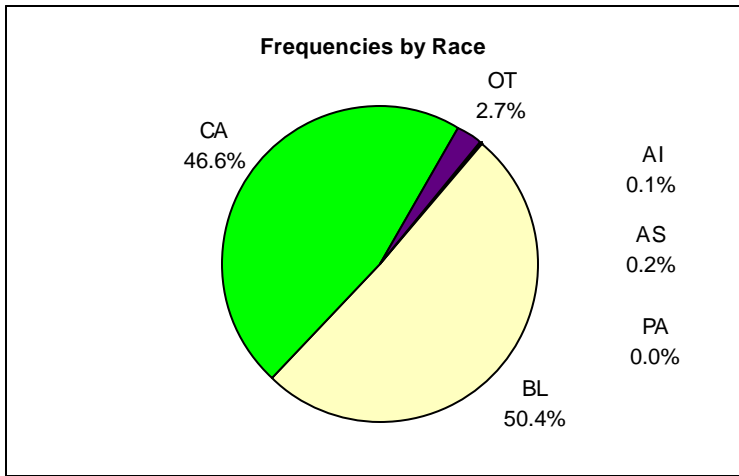
Frequencies by Age Group		
	Frequency	Percent
0..3	909	12.0
4..7	1119	14.8
8..12	1559	20.6
13..17	3346	44.2
18..20	633	8.4
Total	7566	100.0



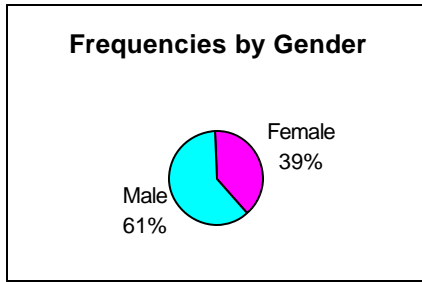
Frequencies by Placement		
	Frequency	Percent
At-Home	6139	81.1
Out-of-Home	1427	18.9
Total	7566	100.0



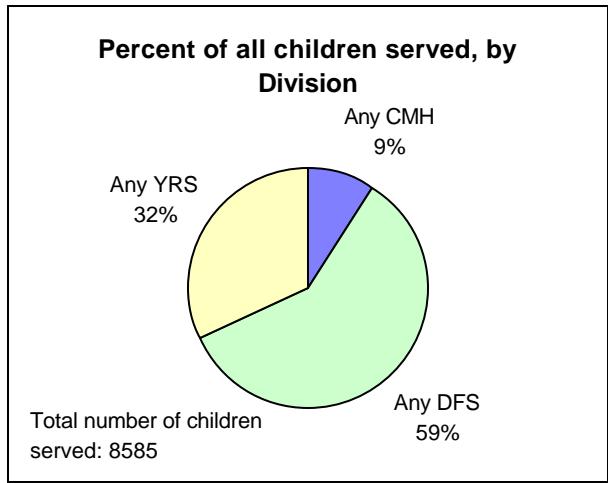
Frequencies by Race		
	Frequency	Percent
AI	7	0.1
AS	13	0.2
BL	3817	50.4
CA	3522	46.6
OT	206	2.7
PA	1	0.0
Total	7566	100.0



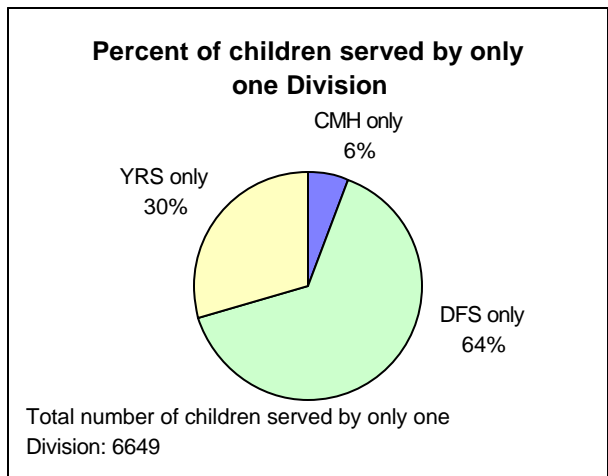
Frequencies by Gender		
	Frequency	Percent
Female	2926	38.7
Male	4640	61.3
Total	7566	100.0



	All	%All
Any CMH	777	9.05
Any DFS	5049	58.81
Any YRS	2759	32.14
Total	8585	100.00



	Only	%Only
CMH only	415	6.24
DFS only	4250	63.92
YRS only	1984	29.84
Total	6649	100.00

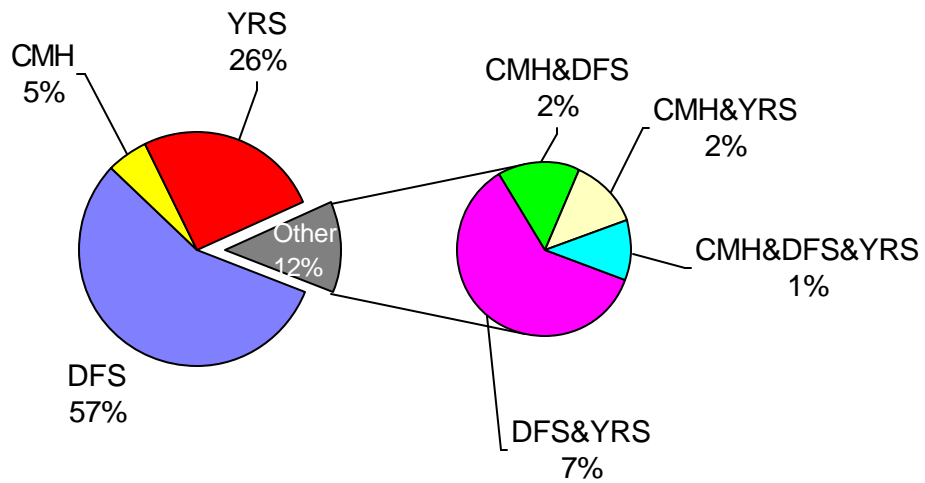


For PieNPie Chart only

Frequencies by Division		
	Frequency	Percent
DFS	4250	56.2
CMH	415	5.5
YRS	1984	26.2
DFS&YRS	555	7.3
CMH&DFS	142	1.9
CMH&YRS	118	1.6
CMH&DFS&YRS	102	1.3
Total	7566	100.0

How were services being used on August 15th, 1999

Children are age 20 or less



The Venn Report

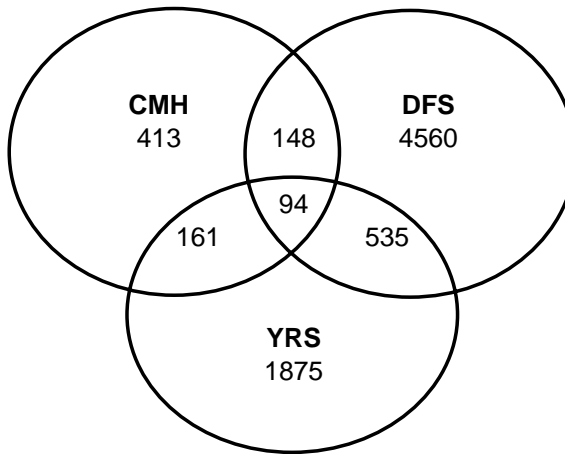
September 1999



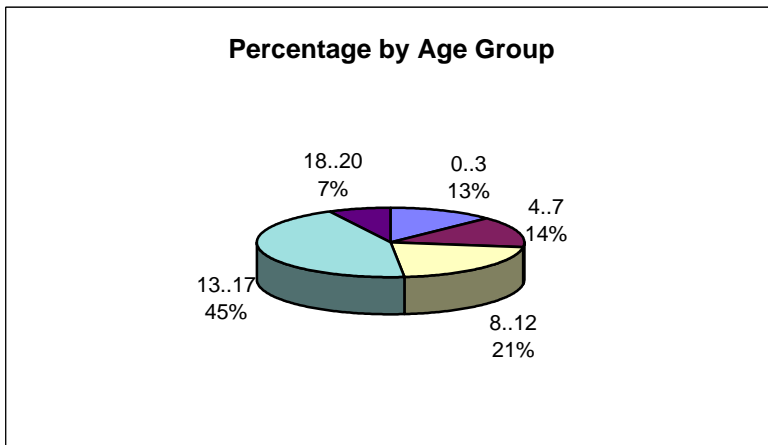
State of Delaware

*The Department of Services
for Children, Youth and Their Families*

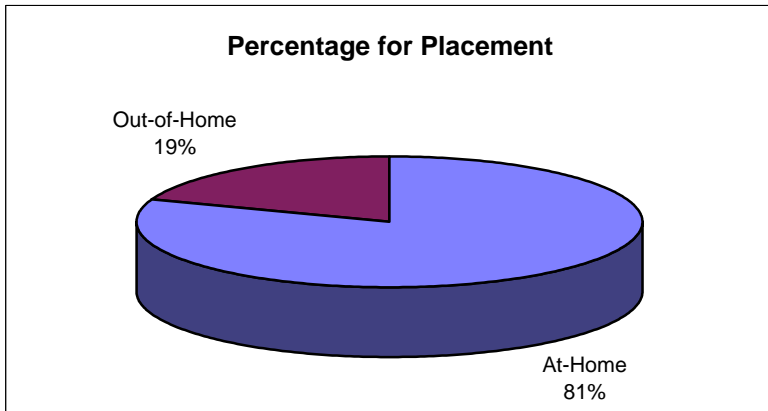
Frequencies by Division		
	Frequency	Percent
CMH	413	5.3
DFS	4560	58.6
YRS	1875	24.1
CMH&DFS	148	1.9
CMH&YRS	161	2.1
DFS&YRS	535	6.9
CMH&DFS&YRS	94	1.2
Total	7786	100.0



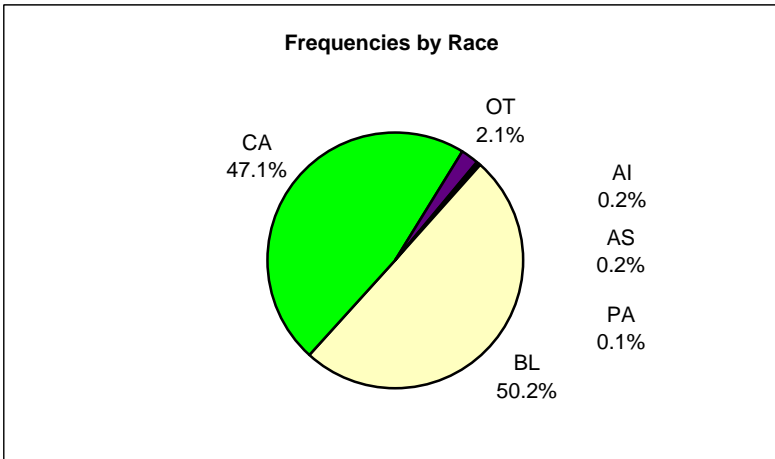
Frequencies by Age Group		
	Frequency	Percent
0..3	997	12.8
4..7	1116	14.3
8..12	1651	21.2
13..17	3447	44.3
18..20	575	7.4
Total	7786	100.0



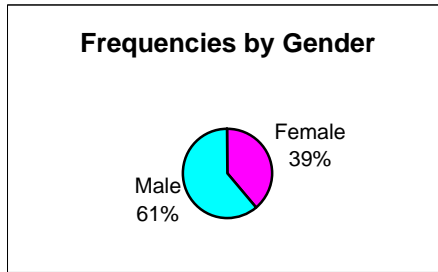
Frequencies by Placement		
	Frequency	Percent
At-Home	6270	80.5
Out-of-Home	1516	19.5
Total	7786	100.0



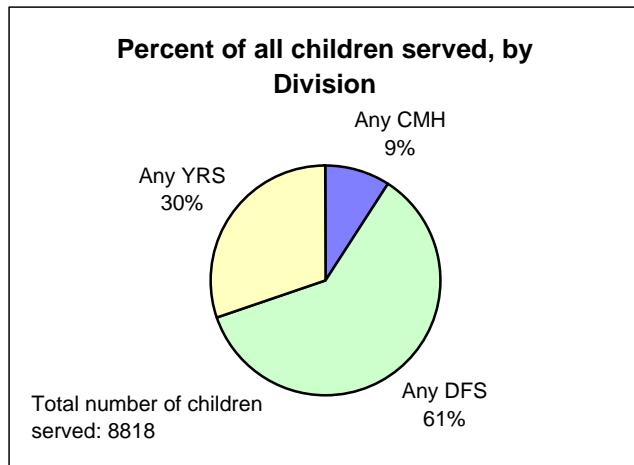
Frequencies by Race		
	Frequency	Percent
AI	14	0.2
AS	19	0.2
BL	3910	50.2
CA	3671	47.1
OT	162	2.1
PA	10	0.1
Total	7786	100.0



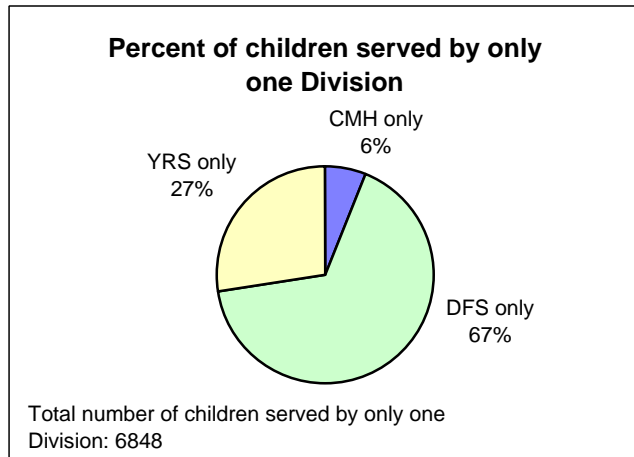
Frequencies by Gender		
	Frequency	Percent
Female	3027	38.9
Male	4759	61.1
Total	7786	100.0



	All	%All
Any CMH	816	9.25
Any DFS	5337	60.52
Any YRS	2665	30.22
Total	8818	100.00



	Only	%Only
CMH only	413	6.03
DFS only	4560	66.59
YRS only	1875	27.38
Total	6848	100.00

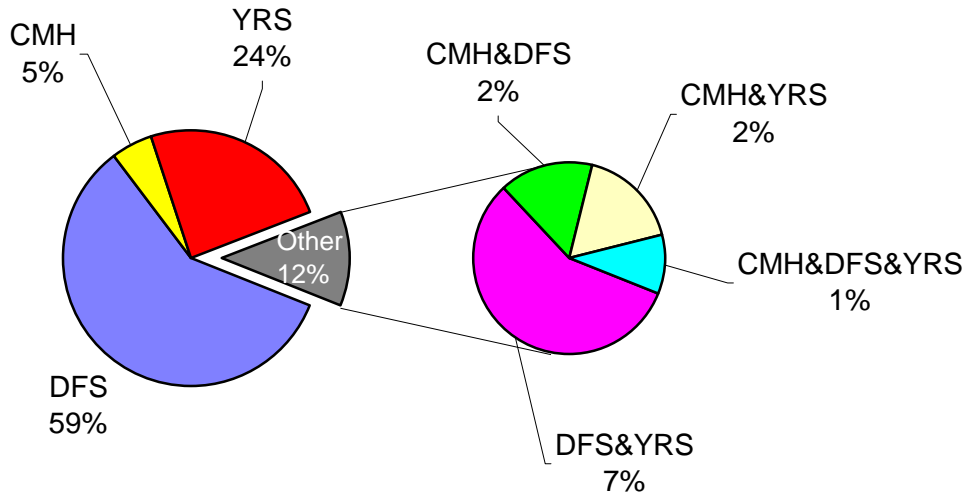


For PieNPie Chart only

Frequencies by Division		
	Frequency	Percent
DFS	4560	58.6
CMH	413	5.3
YRS	1875	24.1
DFS&YRS	535	6.9
CMH&DFS	148	1.9
CMH&YRS	161	2.1
CMH&DFS&YRS	94	1.2
Total	7786	100.0

How were services being used on September 15th, 1999

Children are age 20 or less



The Venn Report

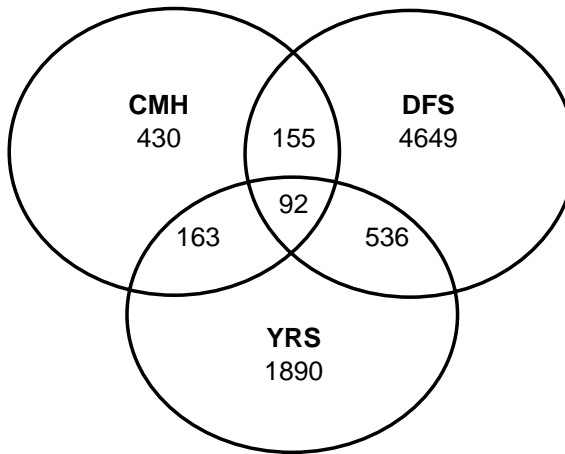
October 1999



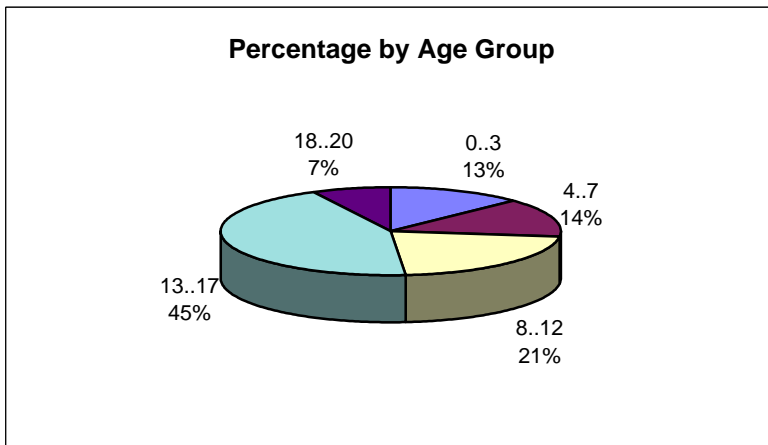
State of Delaware

*The Department of Services
for Children, Youth and Their Families*

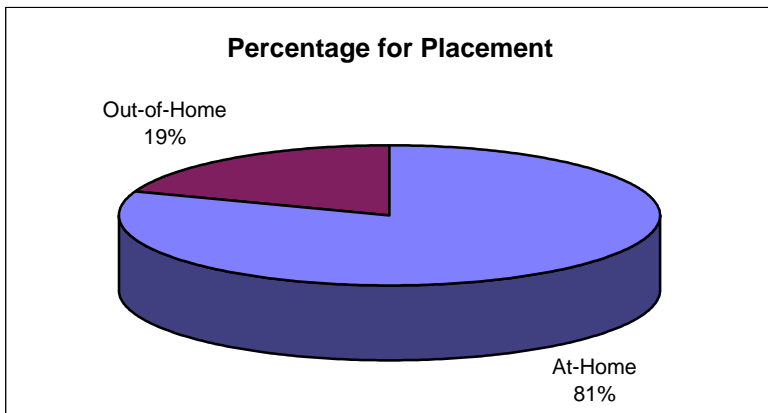
Frequencies by Division		
	Frequency	Percent
CMH	430	5.4
DFS	4649	58.7
YRS	1890	23.9
CMH&DFS	155	2.0
CMH&YRS	163	2.1
DFS&YRS	536	6.8
CMH&DFS&YRS	92	1.2
Total	7915	100.0



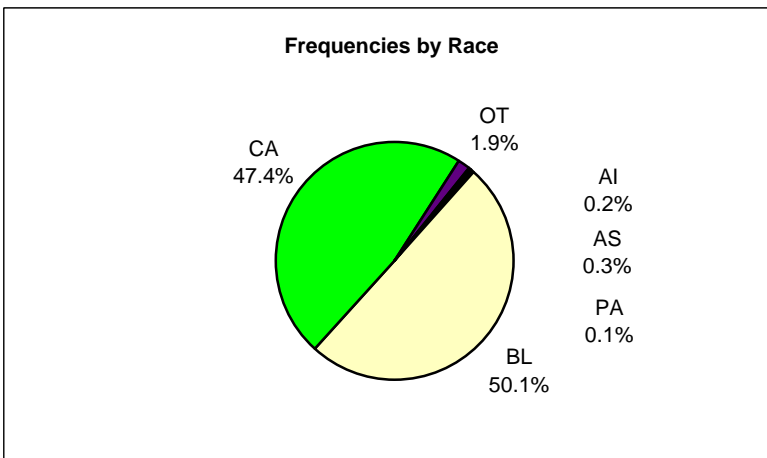
Frequencies by Age Group		
	Frequency	Percent
0..3	1021	12.9
4..7	1122	14.2
8..12	1697	21.4
13..17	3483	44.0
18..20	592	7.5
Total	7915	100.0



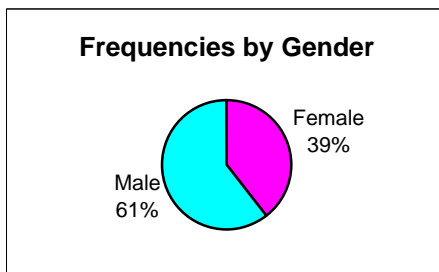
Frequencies by Placement		
	Frequency	Percent
At-Home	6382	80.6
Out-of-Home	1533	19.4
Total	7915	100.0



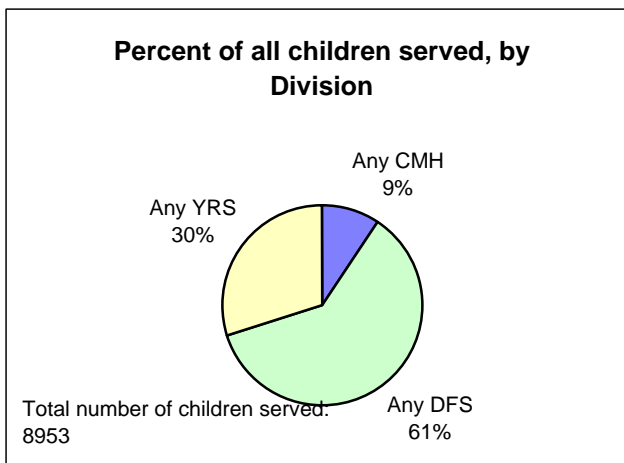
Frequencies by Race		
	Frequency	Percent
AI	14	0.2
AS	20	0.3
BL	3968	50.1
CA	3754	47.4
OT	148	1.9
PA	11	0.1
Total	7915	100.0



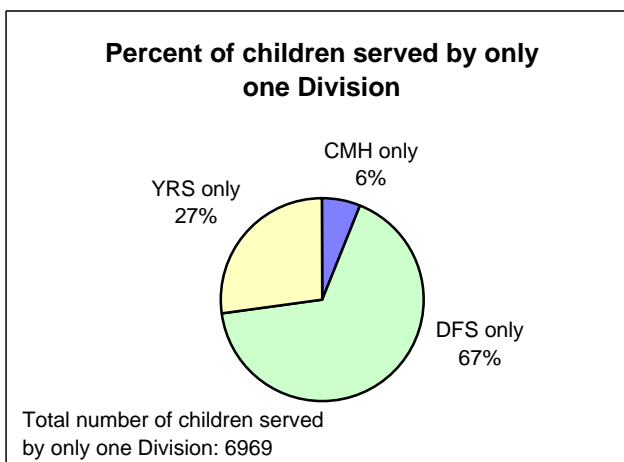
Frequencies by Gender		
	Frequency	Percent
Female	3123	39.5
Male	4792	60.5
Total	7915	100.0



	All	%All
Any CMH	840	9.38
Any DFS	5432	60.67
Any YRS	2681	29.95
Total	8953	100.00



	Only	%Only
CMH only	430	6.17
DFS only	4649	66.71
YRS only	1890	27.12
Total	6969	100.00

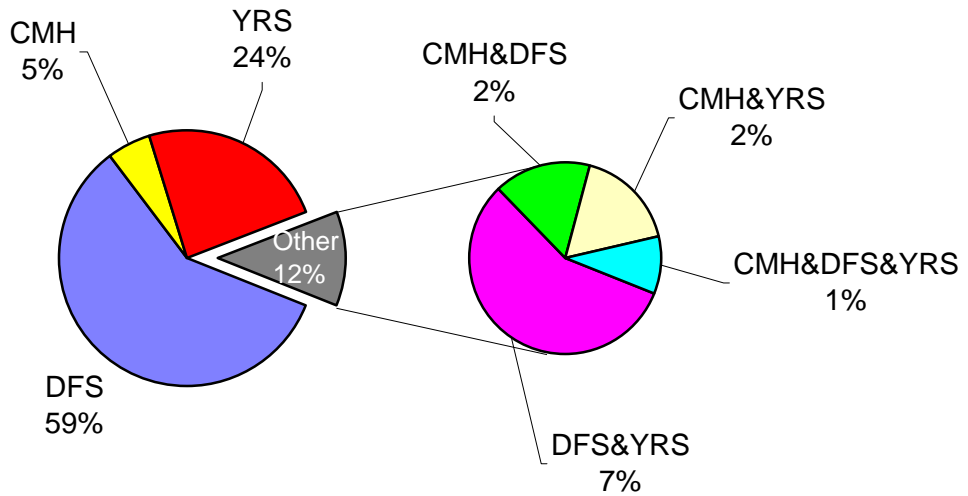


For PieNPie Chart only

Frequencies by Division		
	Frequency	Percent
DFS	4649	58.7
CMH	430	5.4
YRS	1890	23.9
DFS&YRS	536	6.8
CMH&DFS	155	2.0
CMH&YRS	163	2.1
CMH&DFS&YRS	92	1.2
Total	7915	100.0

How were services being used on October 15th, 1999

Children are age 20 or less



The Venn Report

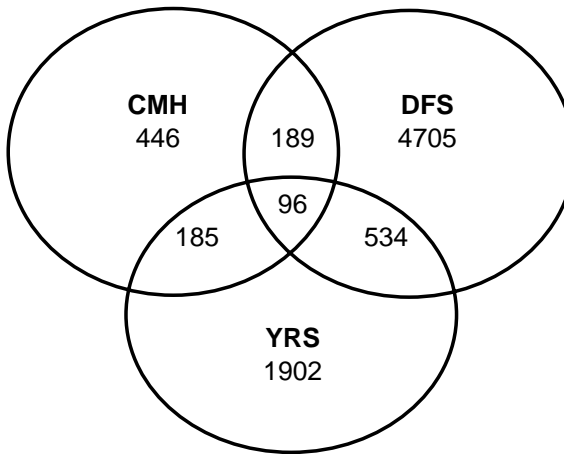
November 1999



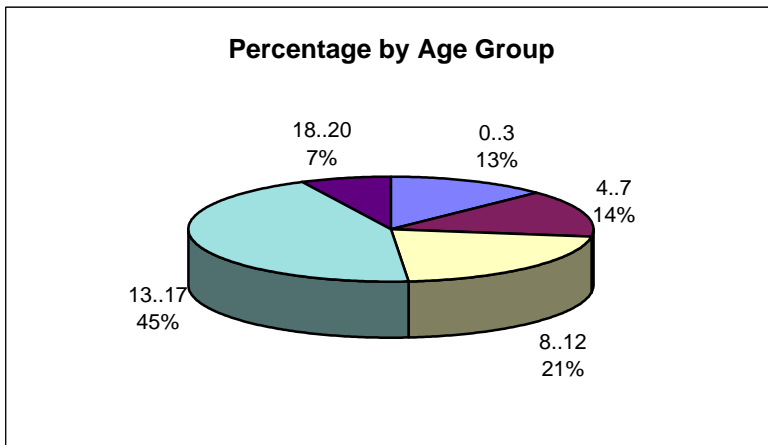
State of Delaware

*The Department of Services
for Children, Youth and Their Families*

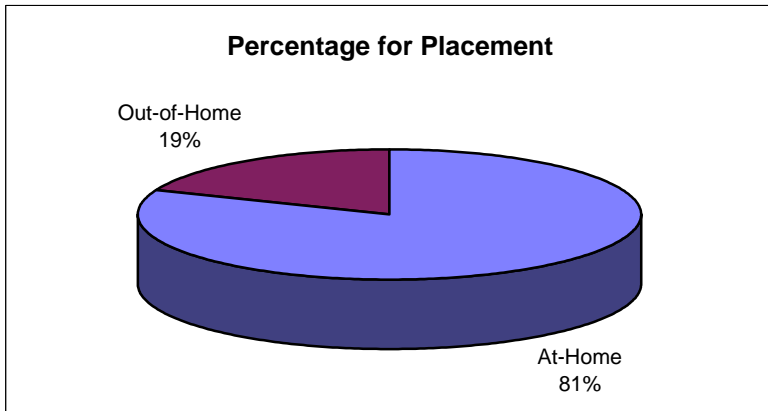
Frequencies by Division		
	Frequency	Percent
CMH	446	5.5
DFS	4705	58.4
YRS	1902	23.6
CMH&DFS	189	2.3
CMH&YRS	185	2.3
DFS&YRS	534	6.6
CMH&DFS&YRS	96	1.2
Total	8057	100.0



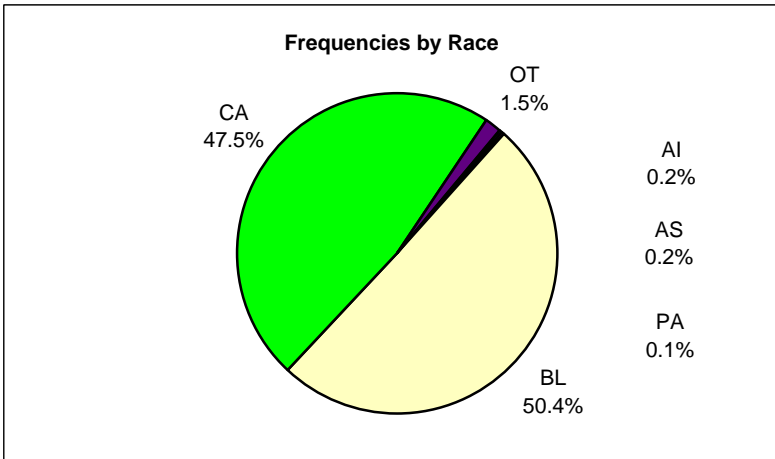
Frequencies by Age Group		
	Frequency	Percent
0..3	1019	12.6
4..7	1168	14.5
8..12	1729	21.5
13..17	3551	44.1
18..20	590	7.3
Total	8057	100.0



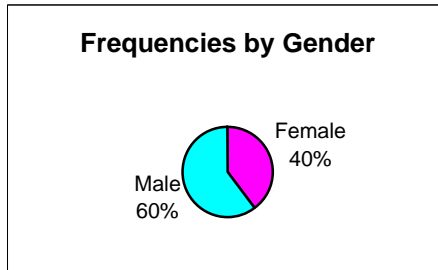
Frequencies by Placement		
	Frequency	Percent
At-Home	6537	81.1
Out-of-Home	1520	18.9
Total	8057	100.0



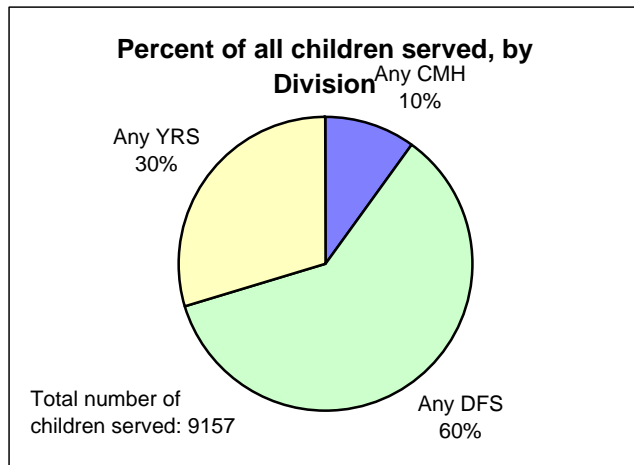
Frequencies by Race		
	Frequency	Percent
AI	18	0.2
AS	19	0.2
BL	4063	50.4
CA	3826	47.5
OT	122	1.5
PA	9	0.1
Total	8057	100.0



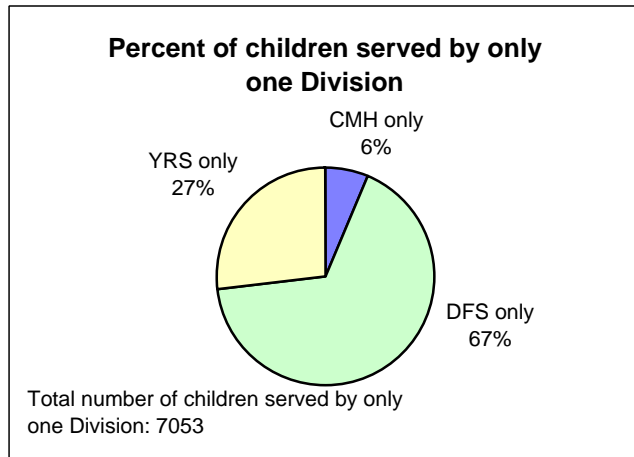
Frequencies by Gender		
	Frequency	Percent
Female	3211	39.9
Male	4846	60.1
Total	8057	100.0



	All	%All
Any CMH	916	10.00
Any DFS	5524	60.33
Any YRS	2717	29.67
Total	9157	100.00



	Only	%Only
CMH only	446	6.32
DFS only	4705	66.71
YRS only	1902	26.97
Total	7053	100.00

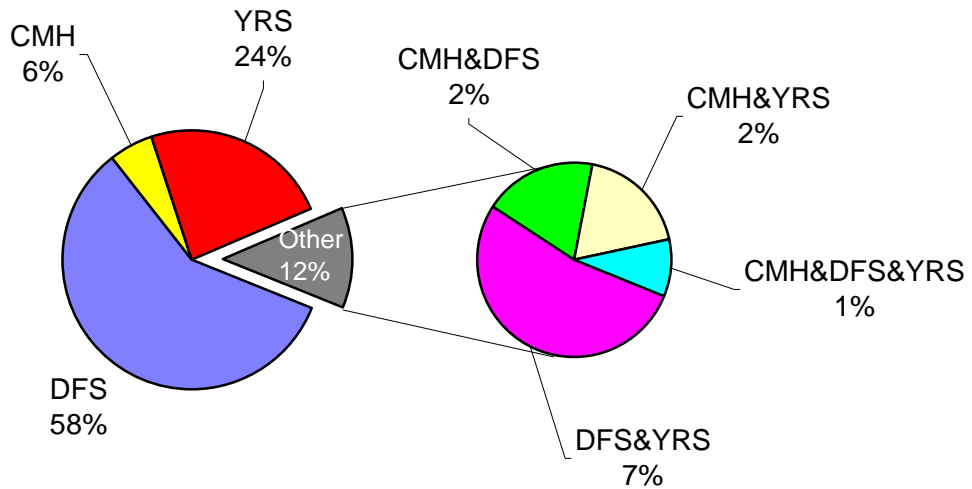


For PieNPie Chart only

Frequencies by Division		
	Frequency	Percent
DFS	4705	58.4
CMH	446	5.5
YRS	1902	23.6
DFS&YRS	534	6.6
CMH&DFS	189	2.3
CMH&YRS	185	2.3
CMH&DFS&YRS	96	1.2
Total	8057	100.0

How were services being used on July 15th, 1999

Children are age 20 or less



The Venn Report

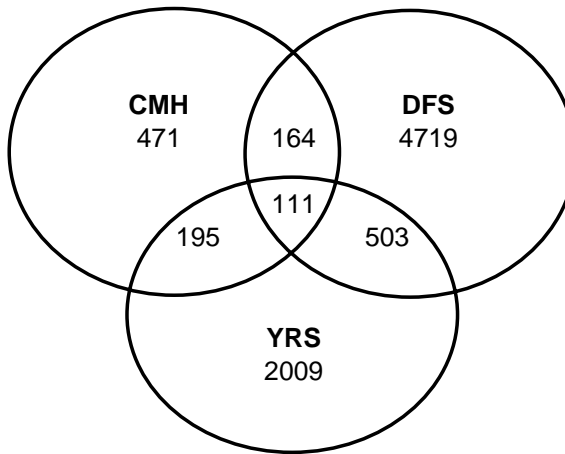
December 1999



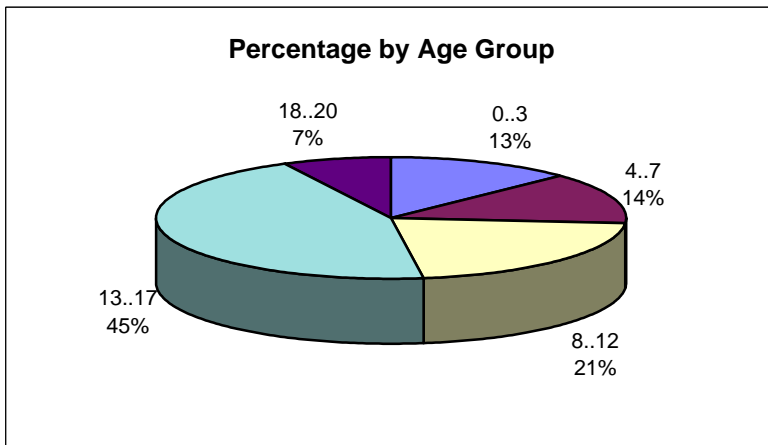
State of Delaware

*The Department of Services
for Children, Youth and Their Families*

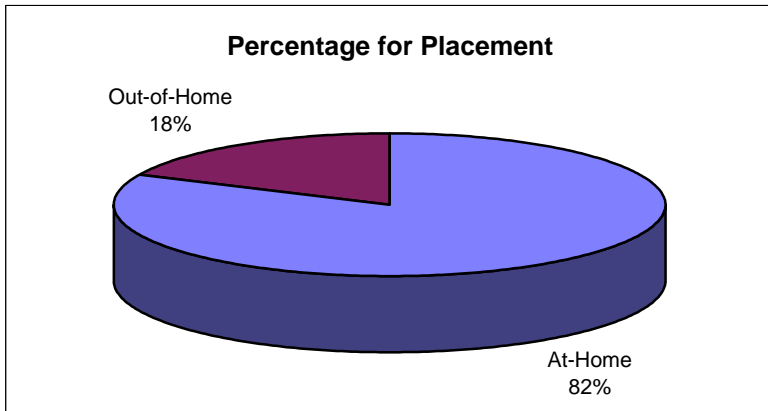
Frequencies by Division		
	<u>Frequency</u>	<u>Percent</u>
CMH	471	5.8
DFS	4719	57.7
YRS	2009	24.6
CMH&DFS	164	2.0
CMH&YRS	195	2.4
DFS&YRS	503	6.2
CMH&DFS&YRS	111	1.4
Total	8172	100.0



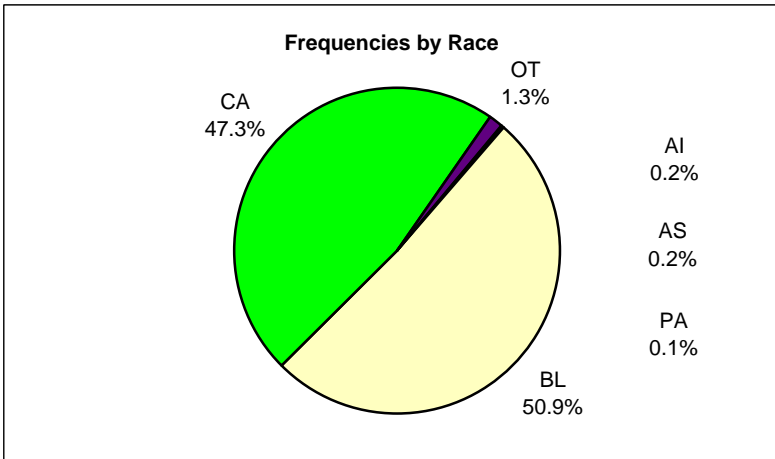
Frequencies by Age Group		
	<u>Frequency</u>	<u>Percent</u>
0..3	1035	12.7
4..7	1128	13.8
8..12	1738	21.3
13..17	3665	44.8
18..20	606	7.4
Total	8172	100.0



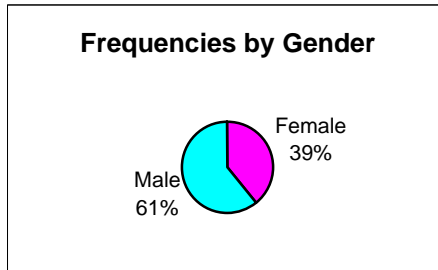
Frequencies by Placement		
	<u>Frequency</u>	<u>Percent</u>
At-Home	6699	82.0
Out-of-Home	1473	18.0
Total	8172	100.0



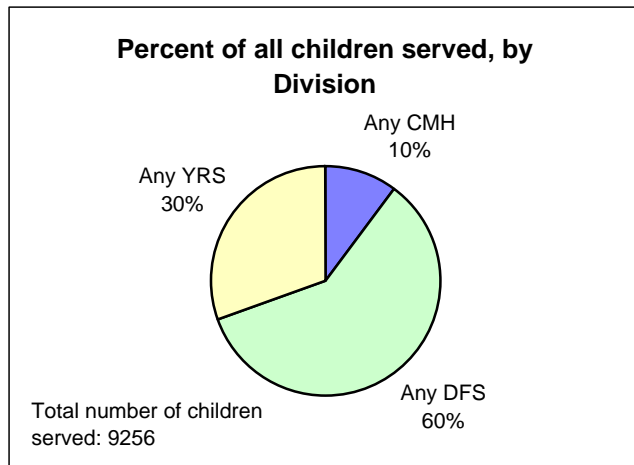
Frequencies by Race		
	Frequency	Percent
AI	19	0.2
AS	14	0.2
BL	4162	50.9
CA	3863	47.3
OT	104	1.3
PA	10	0.1
Total	8172	100.0



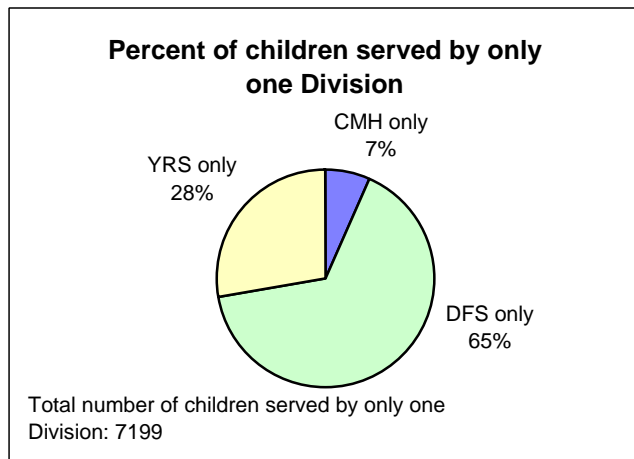
Frequencies by Gender		
	Frequency	Percent
Female	3199	39.1
Male	4973	60.9
Total	8172	100.0



	All	%All
Any CMH	941	10.17
Any DFS	5497	59.39
Any YRS	2818	30.45
Total	9256	100.00



	Only	%Only
CMH only	471	6.54
DFS only	4719	65.55
YRS only	2009	27.91
Total	7199	100.00



For PieNPie Chart only

Frequencies by Division		
	Frequency	Percent
DFS	4719	57.7
CMH	471	5.8
YRS	2009	24.6
DFS&YRS	503	6.2
CMH&DFS	164	2.0
CMH&YRS	195	2.4
CMH&DFS&YRS	111	1.4
Total	8172	100.0

How were services being used on December 15th, 1999

Children are age 20 or less

